

ADDENDUM NO. 02

PROJECT: **VIGO COUNTY JUVENILE CENTER SALLYPORT**
202 Crawford Street, Terre Haute, Indiana 47807

TO: All Prospective Bidders and others to whom Plans and Specifications for the above-referenced Project have been issued.

OWNER: **VIGO COUNTY BOARD OF COMMISSIONERS**
650 South 1st Street
Terre Haute, Indiana 47807
812.231.6200

ARCHITECT: **DLZ INDIANA, LLC**
138 North Delaware Street
Indianapolis, Indiana 46204
317.633.4120
DLZ Project Number: 2463-4014-90

DATE: **JULY 25, 2024**

The items included in this Addendum are to become a part of the original Contract Documents including Drawings and Project Manual dated May 24, 2024, as if included herein. Only these items are to be altered. The remainder of the original Drawings and Project Manual remain valid. Bidders must acknowledge receipt of this Addendum in the space provided on the Proposal Form. Failure to do so may subject the Bidder to disqualification.

CERTIFIED BY:



Eric B. Ratts, AIA
State of Indiana No. 19500134

QUESTIONS AND ANSWERS

ITEM NO. 1. 087100 - DOOR HARDWARE

Question: Door hardware sets are missing from the specifications.

Answer: The door hardware sets are located here:

3.7 DOOR HARDWARE SCHEDULE

B. Hardware Sets:

ITEM NO. 2. 042113 - BRICK MASONRY

Question: What color is the new brick?

Answer: The new brick shall match the existing brick in size, texture and color.

ITEM NO. 3. 013230 - PHOTOGRAPHIC DOCUMENTATION

Question: Is a professional photographer required to take pictures of the construction progress?

Answer: No, a professional photographer is not required.

ITEM NO. 4. 002213 - SUPPLEMENTARY INSTRUCTIONS TO BIDDERS

Question: In section 1.4 ARTICLE 4 - BIDDING PROCEDURES, B. 4.2 – Bid Security 1 d. 4.2.2.4.
What qualifies a subcontractor as a primary subcontractor?

Answer: A primary subcontractor will hold bids from their subcontractors and then issue one bid directly to the General Contractor. Primary subcontractors are typically majors trades such as mechanical, electrical, masonry, roofing etc.

PROJECT MANUAL – VOLUME 1

No Changes

PROJECT MANUAL – VOLUME 2

No Changes

PROJECT MANUAL – VOLUME 3

No Changes

PROJECT MANUAL – VOLUME 4

No Changes

DRAWINGS – VOLUME I

ITEM NO. 5. A3-1 DOOR AND FRAME SCHEDULE AND DETAILS

a. FRAME ELEVATION - Updated dimensions for frame F3.

ATTACHMENTS:

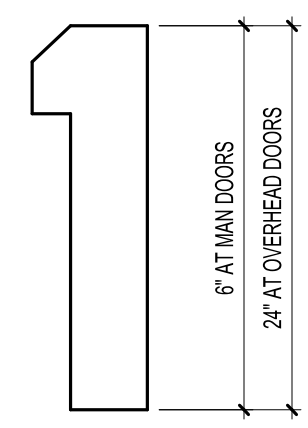
PROJECT MANUAL – VOLUME 1

No Changes

DRAWINGS – VOLUME 1

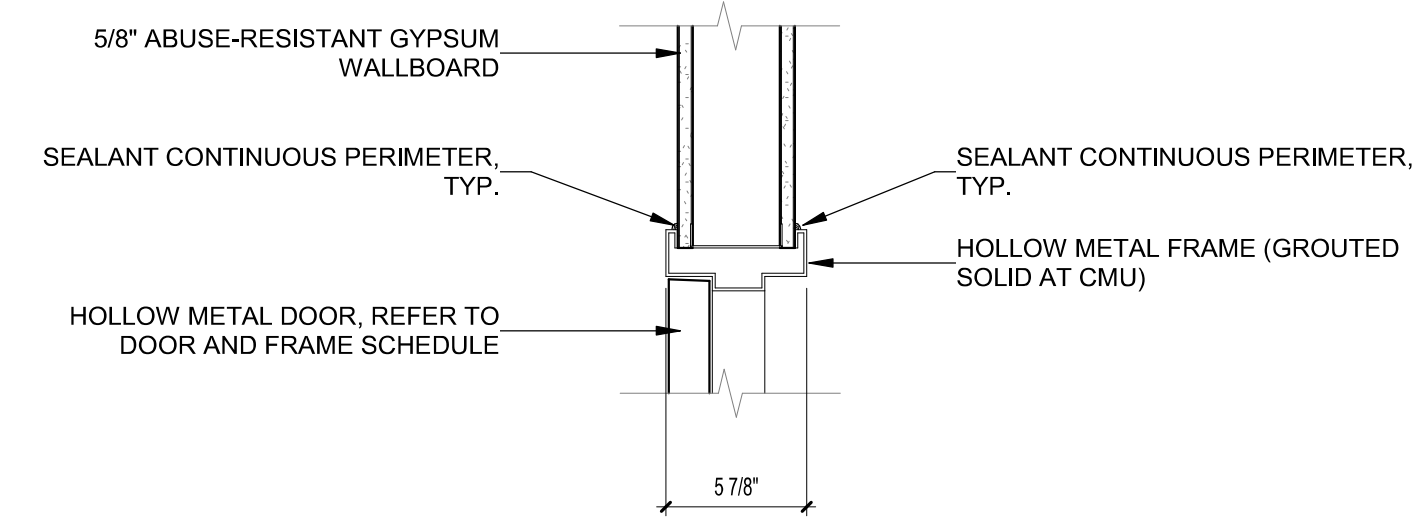
A3-1 DOOR AND FRAME SCHEDULE AND DETAILS

END OF ADDENDUM NO. 02

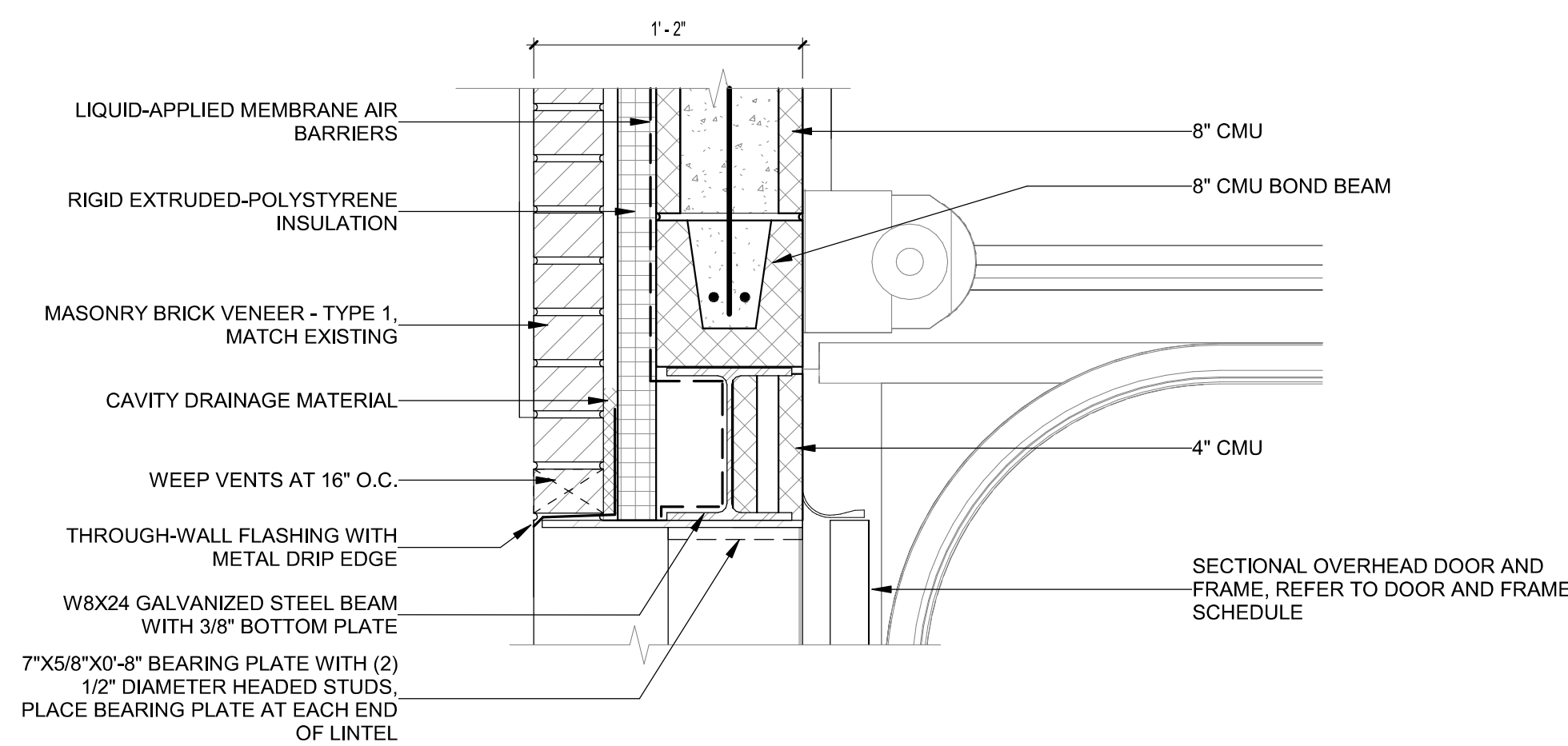


- PAINT ONE (1) DESIGNATION PER DOOR
- UP TO 3 DIGITS

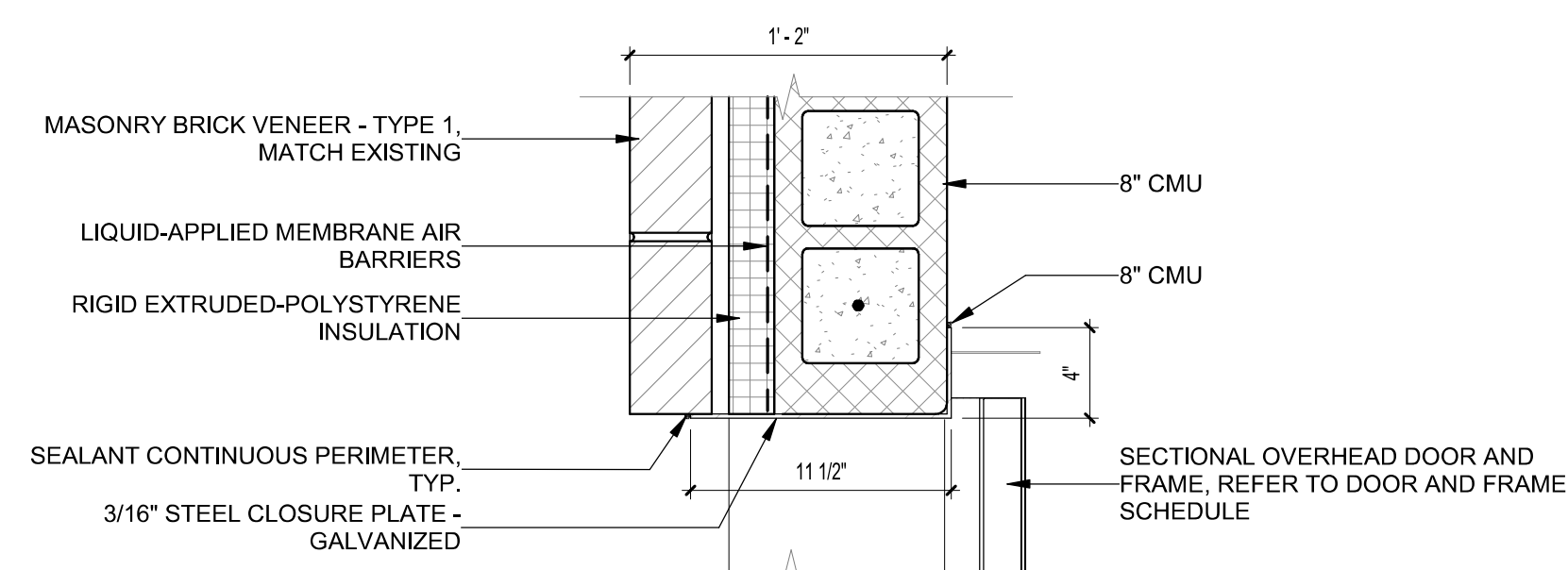
SIGN ELEVATIONS



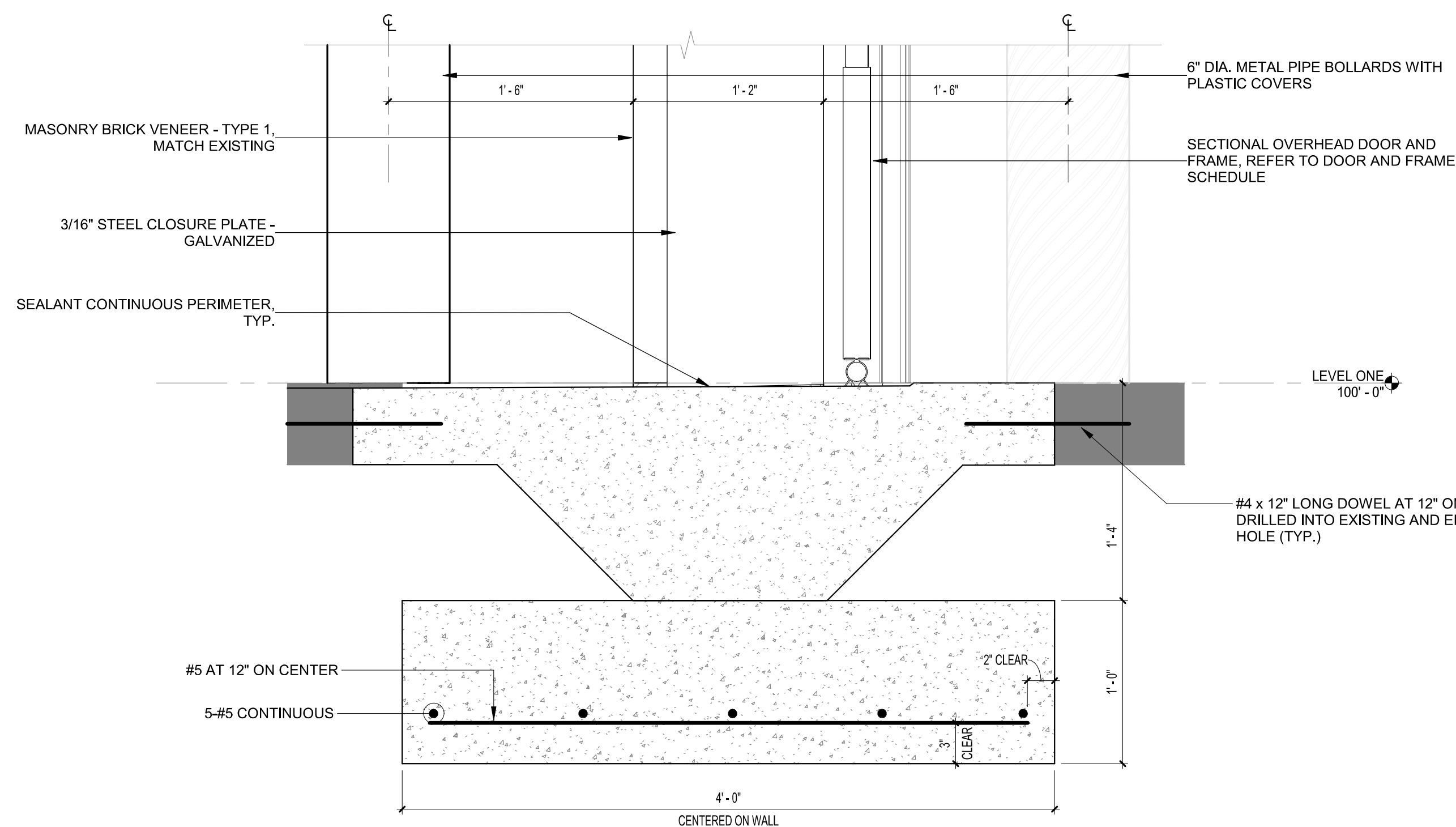
HJ3 DOOR DETAIL - HEAD/JAMB - METAL STUD
SCALE: 1 1/2" = 1'-0"



H2 SECTIONAL DOOR HEAD DETAIL
SCALE: 1 1/2" = 1'-0"



J2 SECTIONAL DOOR JAMB DETAIL
SCALE: 1 1/2" = 1'-0"

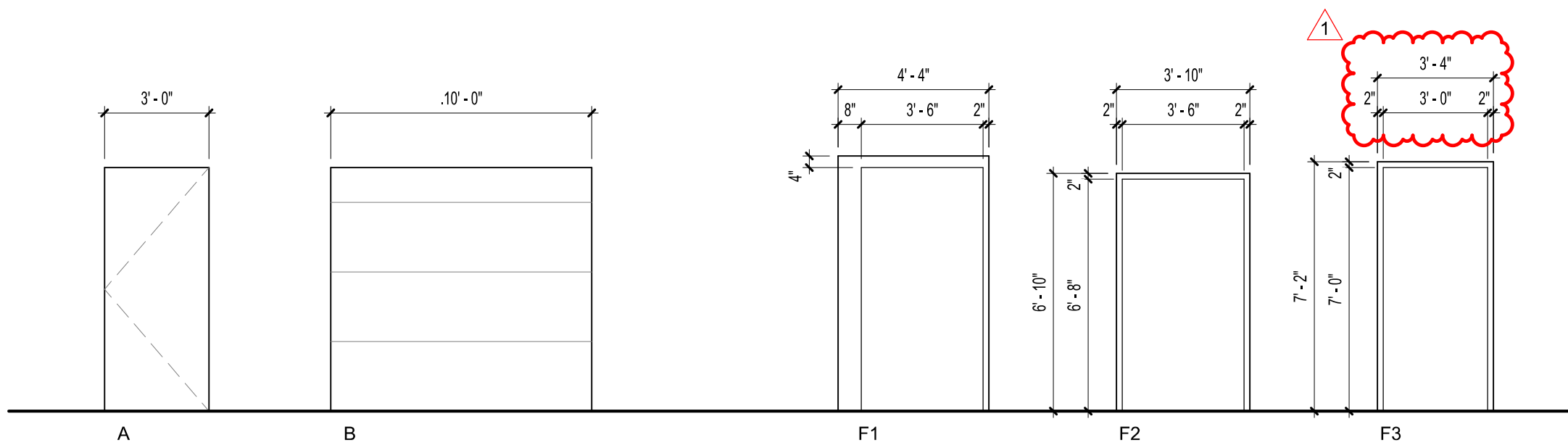


S2 SECTIONAL DOOR SILL DETAIL
SCALE: 1 1/2" = 1'-0"

WT	DOOR						FRAME			DOOR SIGN	HWDR SET	COMMENTS	OPENING NUMBER
	SIZE		MAT'L	ELEV	MAT'L	ELEV	DETAILS						
	HEIGHT	WIDTH					HEAD	JAMB	SILL				
100A	10'-0"	10'-0"	STL	B	STL	---	H2	J2	S2	2	---	100A	
100B	10'-0"	10'-0"	STL	B	STL	---	H2	J2	S2	2	---	100B	
100C	7'-0"	3'-6"	DHM	A	DHM	F1	H1	J1	S1	2	S01	100C	
102A	6'-8"	3'-6"	HM	A	HM	F2	HJ3	HJ3	---	S2	C02	102A	
102B	7'-0"	3'-0"	HM	A	HM	F3	HJ3	HJ3	---	S2	C01	102B	

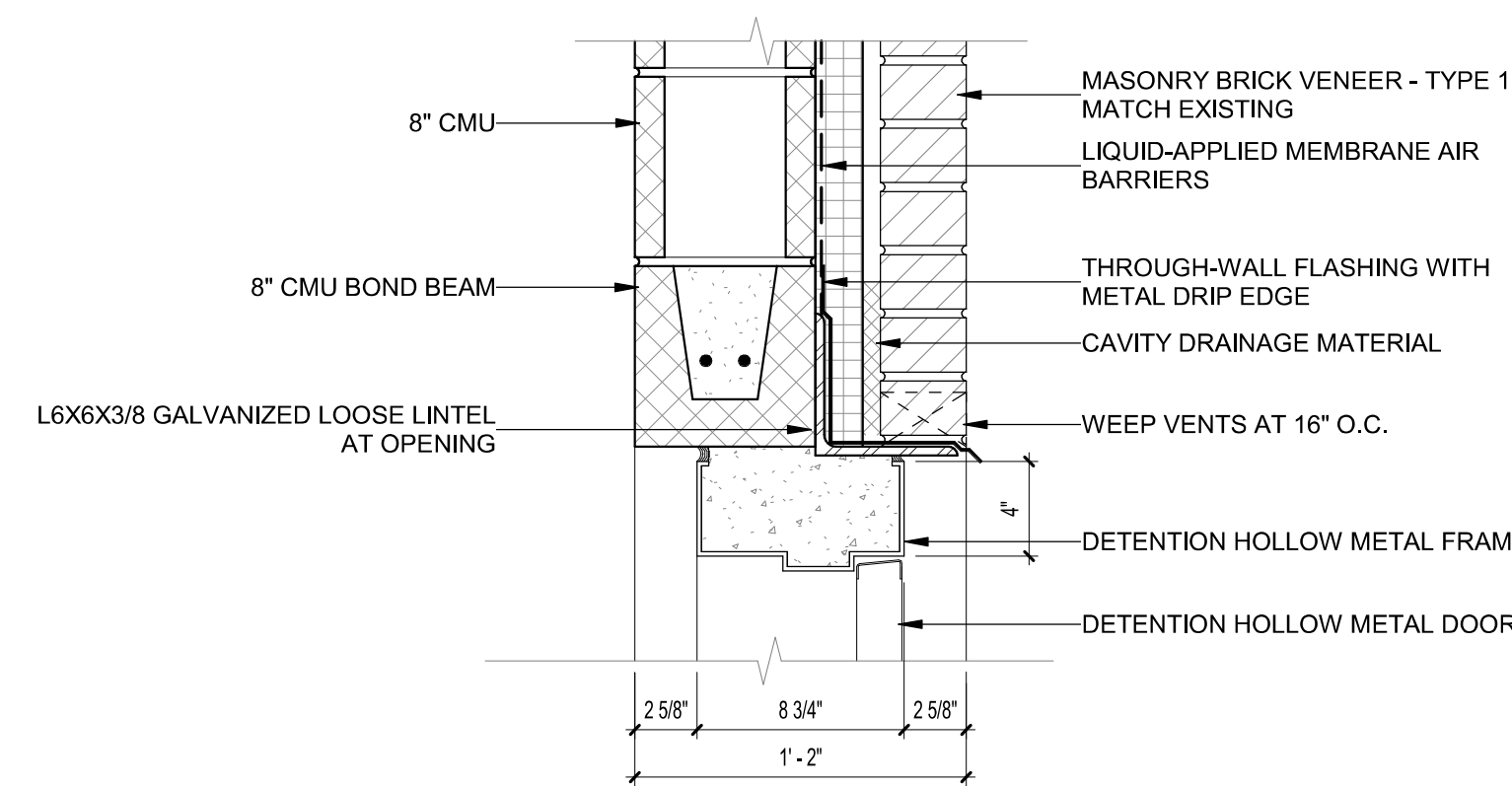
ABBREVIATIONS:
DHM DETENTION HOLLOW METAL
STL STEEL

REMARKS:
1. FOR DOOR HARDWARE, REFER TO PROJECT MANUAL SECTION 08 71 00.
2. ALL EXTERIOR DOORS TO BE INSULATED.

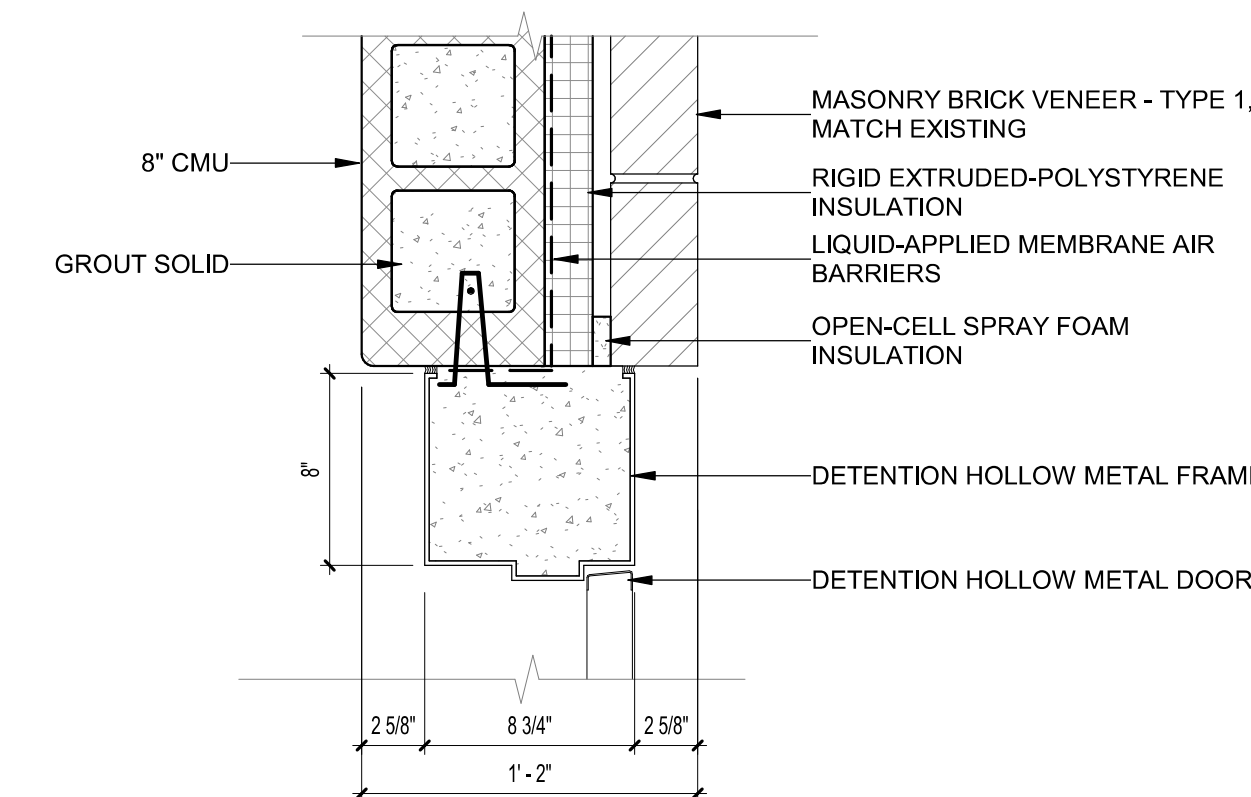


DOOR ELEVATIONS

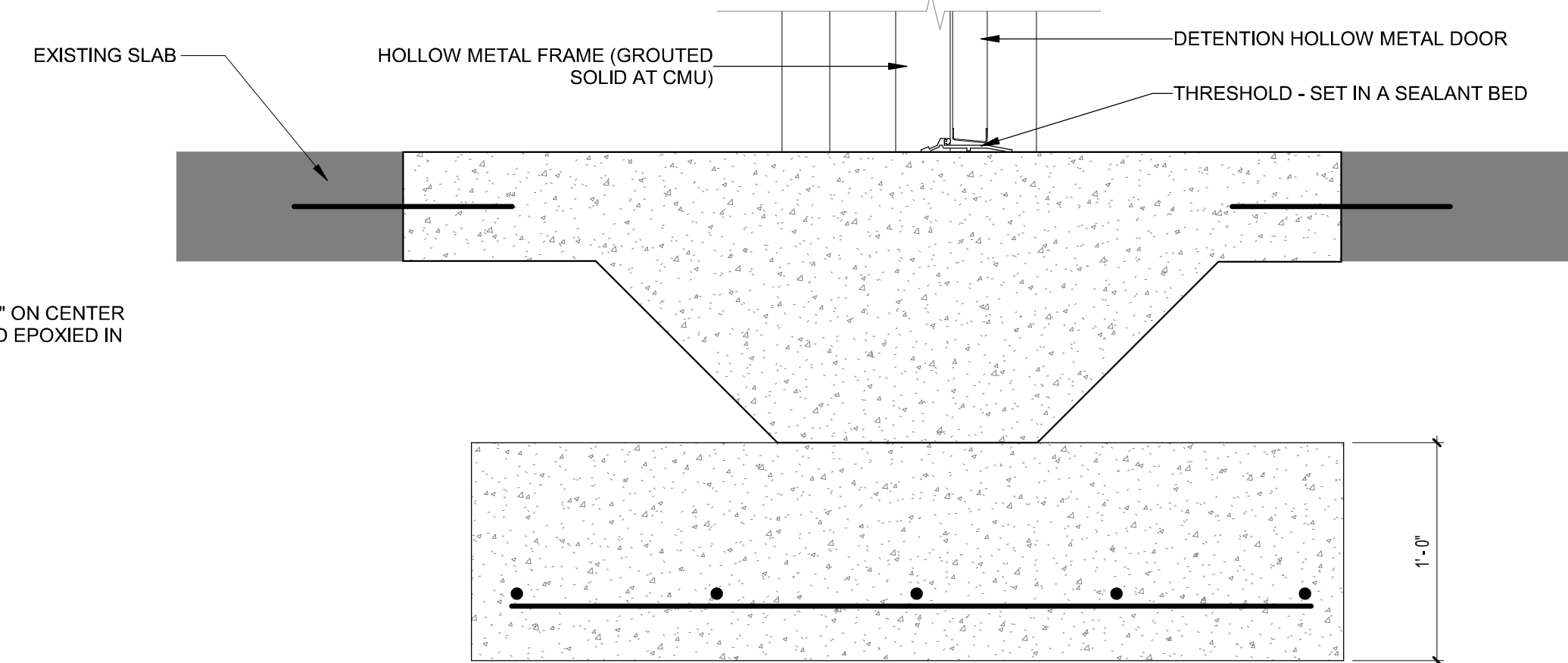
FRAME ELEVATIONS



H1 DOOR HEAD DETAIL - EXTERIOR
SCALE: 1 1/2" = 1'-0"



J1 DOOR JAMB DETAIL - EXTERIOR
SCALE: 1 1/2" = 1'-0"



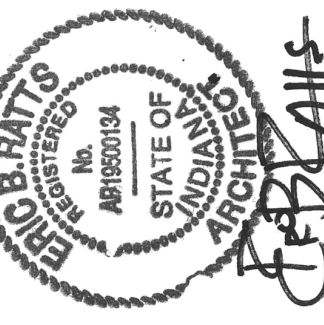
S1 DOOR SILL DETAIL
SCALE: 1 1/2" = 1'-0"

GENERAL NOTES - FLOOR PLANS:

- REFER TO G1.1 FOR ADDITIONAL GENERAL NOTES AND INFORMATION.
 - COORDINATE WITH M.E.P. FOR ANY POWER, DATA OR EQUIPMENT REQUIREMENTS.
 - DIMENSIONS ARE TO FACE OF STUD, CMU AND POST FRAME CONSTRUCTION.
 - ALL KEYNOTES INDICATE ONE GRAPHIC REPRESENTATION TYPICAL. CONTRACTOR SHALL USE THE GRAPHICAL REPRESENTATIONS FOR COUNTS AND NOT THE KEYNOTES. THE ABSENCE OF A KEYNOTE DOES NOT ABSOLVE THE CONTRACTOR FROM PROVIDING THE FEATURE GRAPHICALLY SHOWN ON THE DRAWINGS.
- GENERAL NOTES - DOORS:**
- REFER TO G1.1 FOR ADDITIONAL GENERAL NOTES AND INFORMATION.
 - ALL HOLLOW METAL DOORS AND FRAMES ARE TO BE PAINTED.
 - EXTERIOR HOLLOW METAL DOORS AND FRAMES ARE TO BE GALVANIZED.
 - ALL EXTERIOR DOORS SHALL BE INSULATED.
 - COORDINATE DOOR HARDWARE (I.E. ELECTRIC STRIKE, DOOR POWER SUPPLY, DOOR POSITION SWITCH, DOOR ACTUATOR/CONTROLLER, ETC.) WITH ELECTRICAL CONTRACTOR AND OR SECURITY ELECTRONICS (ACCESS CONTROL) VENDOR. REFER TO KEYNOTE 260033 ON DRAWING ME1.0 FOR ADDITIONAL COORDINATION REQUIREMENTS.
 - REFER TO PROJECT MANUAL FOR ADDITIONAL REQUIREMENTS.

KEYNOTES

- 042201 4" CMU
- 042203 8" CMU
- 042208 8" CMU BOND BEAM
- 042241 THROUGH-WALL FLASHING WITH METAL DRIP EDGE
- 042243 WEEP VENTS AT 16" O.C.
- 042244 CAVITY DRAINAGE MATERIAL
- 042251 GROUT SOLID
- 042801 MASONRY BRICK VENEER - TYPE 1, MATCH EXISTING
- 051202 W8X24 GALVANIZED STEEL BEAM WITH 3/8" BOTTOM PLATE
- 051203 L6X6X3/8 GALVANIZED LOOSE LINTEL AT OPENING
- 051208 3/16" STEEL CLOSURE PLATE - GALVANIZED
- 051209 7"x5/8"x0'-8" BEARING PLATE WITH (2) 1/2" DIAMETER HEADED STUDS. PLACE BEARING PLATE AT EACH END OF LINTEL
- 055040 6" DIA. METAL PIPE BOLLARDS WITH PLASTIC COVERS
- 072112 OPEN-CELL SPRAY FOAM INSULATION
- 072120 RIGID EXTRUDED-POLYSTYRENE INSULATION
- 072720 LIQUID-APPLIED MEMBRANE AIR BARRIERS
- 079202 SEALANT CONTINUOUS PERIMETER, TYP.
- 081101 HOLLOW METAL DOOR, REFER TO DOOR AND FRAME SCHEDULE
- 081102 HOLLOW METAL FRAME (GROUTED SOLID AT CMU)
- 083412 DETENTION HOLLOW METAL DOOR
- 083413 DETENTION HOLLOW METAL FRAME
- 083601 SECTIONAL OVERHEAD DOOR AND FRAME, REFER TO DOOR AND FRAME SCHEDULE
- 087103 THRESHOLD - SET IN A SEALANT BED
- 092931 5/8" ABUSE-RESISTANT GYPSUM WALLBOARD



NO.	REVISION	DATE
1	ADDENDUM #2	7/22/2024

INDIANA
TERRE HAUTE
VIGO COUNTY COMMISSIONERS
VIGO COUNTY JUVENILE CENTER SALLYPORT
DOOR AND FRAME SCHEDULE AND DETAILS

DRAWING NUMBER
A3.1
ARCHITECTURE

2463-4014-90