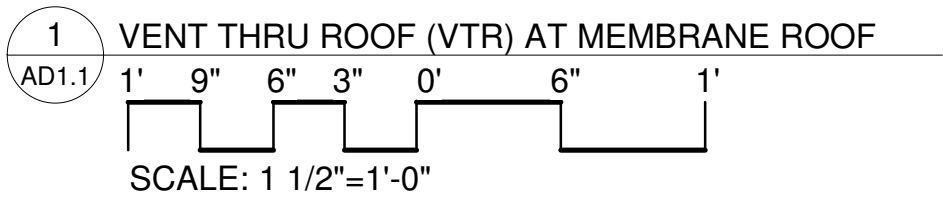
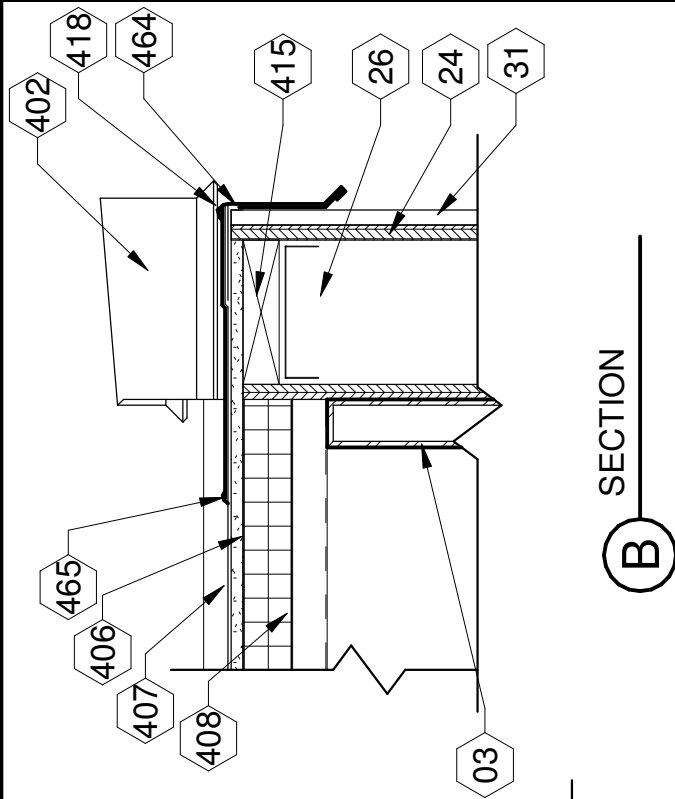


ADDED AS DETAIL 9 / SHEET A3.0



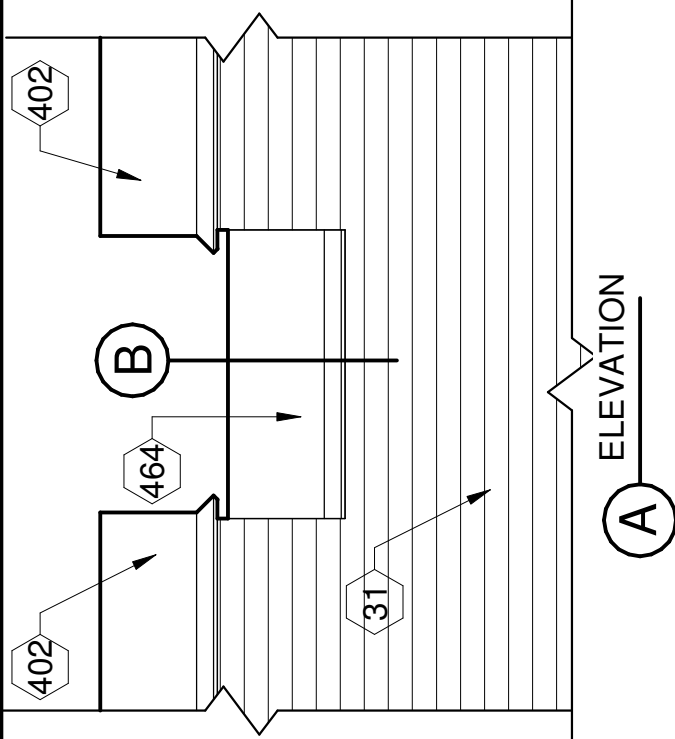
KEYNOTES

#	
404	PROVIDE NEW VENT PIPE. SEE VENTILATION AND PLUMBING DRAWINGS FOR SIZE AND LOCATIONS, TYPICAL.
405	PROVIDE NEW PRE-FORMED BOOT FLASHING WITH STAINLESS STEEL CLAMPING RING. SEE SPEC., TYP.
406	PROVIDE 1/2" COVER BOARD, TYP. SEE SPECS.
407	PROVIDE 80 MIL FULLY ADHERED TPO ROOF MEMBRANE, TYP. SEE SPECS.
408	PROVIDE CONTINUOUS RIGID INSULATION (R-30 MIN.), TYP. SEE SPECS.
409	PROVIDE METAL ROOF DECK, TYP. SEE STRUCTURAL DRAWINGS.
494	PROVIDE FASTENERS AND FASTENER PLATE PER MANUFACTURER'S REQUIREMENTS TO MEET SPECIFIED WARRANTY. FASTENERS TO BE ADEQUATELY ANCHORED TO ROOF DECK.



SECTION

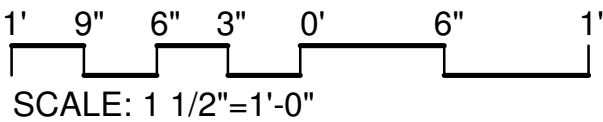
(B)



ELEVATION

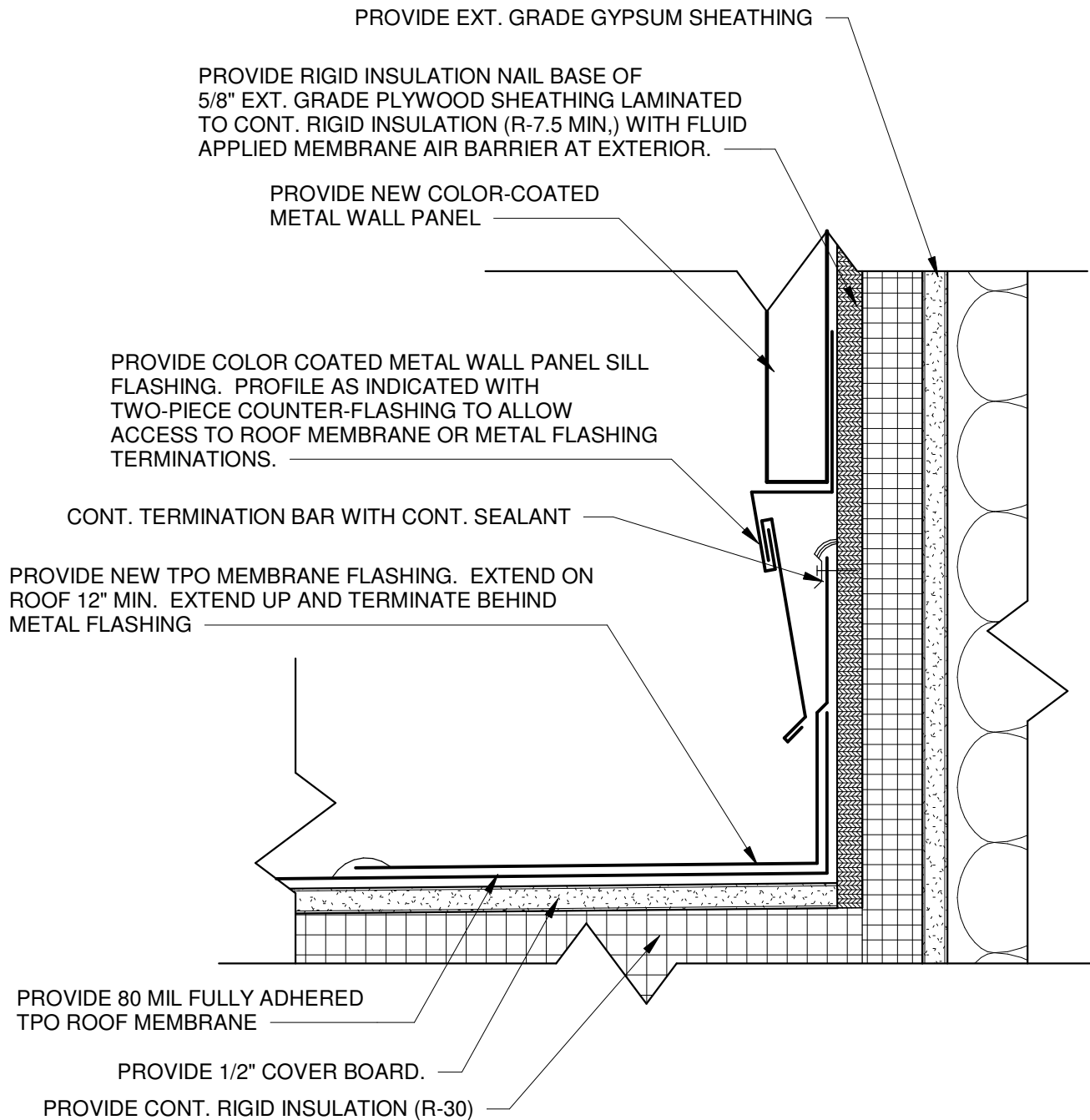
(A)

ADDED AS DETAIL 8 / SHEET A3.1



KEYNOTES

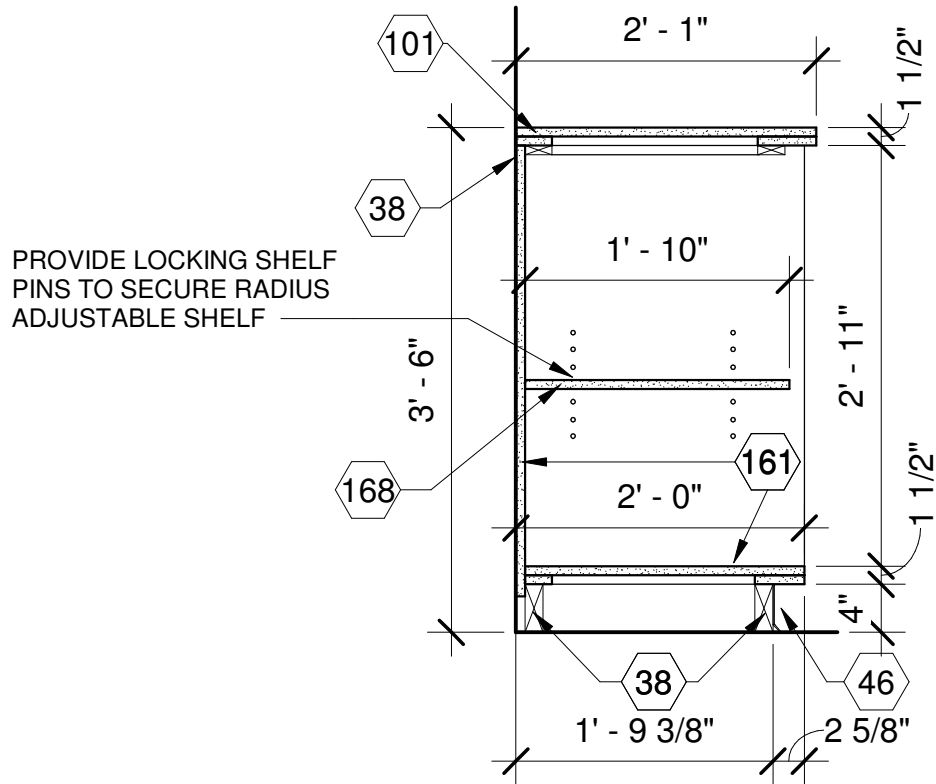
#	KEYNOTES
03	PROVIDE NEW STRUCTURAL STEEL. PREPARE AND PAINT WHERE EXPOSED. SEE STRUCTURAL DRAWINGS, TYP.
24	PROVIDE 5/8" EXTERIOR GRADE GYPSUM SHEATHING, TYP. SEE SPECS.
26	PROVIDE 6" METAL STUDS AT 1'-4" O.C., MAX WITH R-13 BATT INSULATION BETWEEN (WHERE INDICATED).
31	PROVIDE NEW COLOR-COATED METAL WALL PANEL. SEE SPECS, TYPICAL.
402	PROVIDE COLOR-COATED METAL PARAPET CAP FLASHING, WITH SLOPED TOP AND CONTINUOUS CLEATS. SEE SPECS, TYPICAL.
406	PROVIDE 1/2" COVER BOARD, TYP. SEE SPECS.
407	PROVIDE 80 MIL FULLY ADHERED TPO ROOF MEMBRANE, TYP. SEE SPECS.
408	PROVIDE CONTINUOUS RIGID INSULATION (R-30 MIN.), TYP. SEE SPECS.
415	PROVIDE TREATED 2X WOOD BLOCKING AS REQUIRED, TYPICAL.
418	PROVIDE 6" WIDE COVER TAPE AND CONT. ADHESIVE AND SEAM SEALER AT MEMBRANE TIE-IN JOINT, TYPICAL.
464	PROVIDE COLOR-COATED ALUMINUM ROOF EAVE FLASHING WITH CONT. CLEAT, TYPICAL.
465	PROVIDE TPO MEMBRANE FLASHING, EXTEND ON FIELD 12" MINIMUM.



METAL WALL PANEL SILL FLASHING DETAIL AT ROOF

ADDED AS DETAIL 10 / SHEET A3.0

**NOTE:** FLASHING CONDITION APPLICABLE TO AREAS WITH ROOF TRANSITION BELOW METAL WALL PANEL. PROVIDE TWO-PIECE COUNTER-FLASHING TO ALLOW ACCESS TO ROOF MEMBRANE OR METAL FLASHING TERMINATIONS. AT AREAS WITHOUT ROOF TRANSITIONS BELOW, PROVIDE TYPICAL METAL PANEL SILL FLASHING.



CASEWORK - DRAWER UNIT

ADDED AS DETAIL 22 / SHEET A7.1