

ADDENDUM NO. 3

South Putnam Middle School/High School Fieldhouse Addition

South Putnam Community School Corporation
Greencastle, Indiana

Project No. 222152.03

Index of Contents

Addendum No. 3, 2 items, 1 page
Revised Drawing Sheets: Index A, Index B, C0.0, C1.0, C5.0, C8.0 and T-503

Date: July 2, 2024

I hereby certify that this Addendum was prepared by me or under my direct supervision and that I am a duly registered Architect/Engineer under the Laws of the State of Indiana.

FANNING/HOWEY ASSOCIATES, INC.
ARCHITECTS/ENGINEERS/CONSULTANTS



Paul A. Miller, License No. AR10800161
Expiration Date: 12/31/2025

TO: ALL BIDDERS OF RECORD

ADDENDUM NO. 3 to Drawings and Project Manual, dated May 23, 2024, for South Putnam Community School Corporation, 3999 South US Highway 231, Greencastle, Indiana 46135; as prepared by Fanning/Howey Associates, Inc., Indianapolis, Indiana.

This Addendum shall hereby be and become a part of the Contract Documents the same as if originally bound thereto.

The following clarifications, amendments, additions, revisions, changes, and modifications change the original Contract Documents only in the amount and to the extent hereinafter specified in this Addendum.

Each bidder shall acknowledge receipt of this Addendum in his proposal or bid.

NOTE: Bidders are responsible for becoming familiar with every item of this Addendum. (This includes miscellaneous items at the very end of this Addendum.)

RE: ALL BIDDERS

ITEM NO. 1. ACCEPTABLE MANUFACTURERS

The following manufacturers are to be considered acceptable manufacturers (suppliers and fabricators) for the Sections of the Specifications listed. Listed manufacturers are required to bid on products equal in type and design, size, function, and quality to that originally specified. Final decision as to equality of products specified versus those proposed shall be made by the Architect.

Section 21 32 13 – Electric-Drive, Vertical-Turbine Fire Pumps
- Peerless Pump, Indianapolis, Indiana

ITEM NO. 2. REVISED DRAWING SHEETS

A. Drawing Sheets: Index A, Index B, C0.0, C1.0, C5.0, C8.0 and T-503 have been revised, dated 07/02/24 and are included with and hereby made a part of this Addendum. These Drawings supersede the original documents.

END OF ADDENDUM

ARCHITECTURAL/SITE ABBREVIATIONS

ABBREVIATIONS USED ON THE CONTRACT DOCUMENTS, INCLUDE BUT ARE NOT LIMITED TO THOSE LISTED BELOW

Table of architectural and site abbreviations including terms like ACT, AD, AFF, AGG, ALT, AL, AP, APPROX, AR, ARCH, ASPH, AV, AWG, AWT, &, BIT, BLDG, BLOC, BM, B.O., BOS, BOT, BRG, BRK, BUR, CAB, CAR, CAT, CB, CFM, CH, CI, CJ, CL, CLR, CLG, CMP, CMT, CMU, CO, COL, COMP, CONC, CONSTR, CONT, CONTR, CORR, CT, C TO C, CSK, CU FT/CF, CU INCH, CU YD, CUSP, CW, & D, DEGREE, DC, DEPT, DET, DF, DIM, DIV, DL, DWG, DS, E, EA, EF, EJ, ELEV, ELEC, ELEV, ENGR, EP, EQ, EQUIP, EW, EFS (or DEFS), EXH, EXIST, EXP, EXT, EXTN, FD, FHC, FN, FN FL, FLR, FDN, FSR, FSSK, FT, FTG, FE, FEC, GA, GALV, GB, GF, GFU, GL, GWB, H, HB, HEW, HM, HORIZ, HPT, HS, HTG, HWAC, HW, HWY, ID, IN, INCL, INFO, INSUL, INT, INV, JS, JST, JT, KIT, L, LAV, LBB, LKR, LL, LLH, LLV, LVR, LW.

MATERIAL SYMBOLS LEGEND

MATERIAL SYMBOLS USED ON THE CONTRACT DOCUMENTS, INCLUDE BUT ARE NOT LIMITED TO THOSE LISTED BELOW

Table of material symbols including ASPHALT, EARTH, GRAVEL, STONE, OR DRAINAGE FILL, SAND, GROUT, PLASTER, GWB, OR PLAN VIEW OF SIDEWALK, CONCRETE, TERRAZZO, CUT STONE, MARBLE, SLATE, FACE BRICK (PLAN), GLAZED BRICK, CONCRETE MASONRY UNIT (PLAN), CONCRETE MASONRY UNIT (SECTION), CONCRETE MASONRY UNIT (SOLID, IN SECTION), SPRAY-ON INSULATION OR FIRE PROTECTION, WIRE FENCE OR PARTITION, METAL ROOF DECK, LAMINATED WOOD BEAM (SMALL SCALE, SECTION), BATT INSULATION, RIGID INSULATION, ROUGH WOOD, FINISH WOOD, WOOD OTHER THAN NOMINAL, PLYWOOD, GYPSUM WALLBOARD (LARGE SCALE), STUD WALL (PLAN) - DIMENSIONS TAKEN TO FINISH FACE OF WALL - SEE WALL TYPES, SOLID PANEL FOLDING PARTITION OR OPERABLE WALL, FABRIC ACCORDION FOLDING PARTITION, ACOUSTICAL TILE CEILING, EXTERIOR INSULATION FINISH SYSTEM.

DRAWING SYMBOLS LEGEND

DRAWING SYMBOLS USED ON THE CONTRACT DOCUMENTS, INCLUDE BUT ARE NOT LIMITED TO THOSE LISTED BELOW

Table of drawing symbols including CALLOUT, EQUIPMENT TAG, CEILING TAG, KEY NOTE TAG, DOOR TAG, EXTERIOR ELEVATION, INTERIOR ELEVATION, GRID HEAD, LEVEL LINE, REVISION TAG, ROOF TYPE TAG, BUILDING WALL SECTION, DETAIL SECTION, ROOF SLOPE TAG, MATCHLINE VIEW REFERENCE, WALL TAG, STOREFRONT TAG, WINDOW TAG, ROOM TAG, EXISTING CONTOUR, NEW CONTOUR, TEST BORING & NO., EXISTING POINT ELEVATION, NEW POINT ELEVATION, STORM SEWER INLETS.

SHEET INDEX

VOLUME A

Table of sheet index for Volume A including COVER ABBREVIATIONS AND INDEX, 01 CIVIL, 02 LANDSCAPE, 03 STRUCTURAL, 04 ARCHITECTURAL, 05 INTERIORS, 06 EQUIPMENT.

VOLUME B

Table of sheet index for Volume B including COVER ABBREVIATIONS AND INDEX, 07 PLUMBING, 08 MECHANICAL, 09 ELECTRICAL, 10 TECHNOLOGY.

SOUTH PUTNAM MS / HS - FIELDHOUSE ADDITION

1780 EAST U.S. HIGHWAY 40 GREENCASTLE, IN 46135



ARCHITECT



317-848-0966 WWW.FHAI.COM

390 E. NEW YORK ST. SUITE 300 INDIANAPOLIS, IN 46204

100% CONSTRUCTION DOCUMENTS

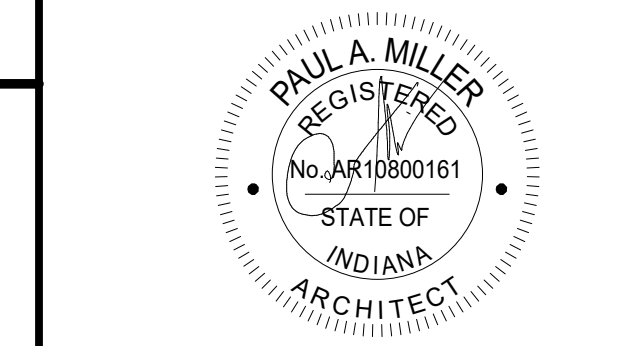


Table with columns: REV. NO., DESCRIPTION, DATE. Includes entries for ADDENDUM #1 and ADDENDUM #5.

ABBREVIATIONS & INDEX

INDEX A

ARCHITECTURAL/SITE ABBREVIATIONS

ABBREVIATIONS USED ON THE CONTRACT DOCUMENTS, INCLUDE BUT ARE NOT LIMITED TO THOSE LISTED BELOW

@	AT	M	METER
AC	AIR CONDITIONING	MAS	MASONRY
ACT	ACOUSTICAL CEILING TILE	MAT	MATERIAL
AD	AREA DRAIN	MAX	MAXIMUM
ADJ	ADJUSTABLE	MB	MARKER BOARD
AF	ABOVE FINISHED FLOOR	MECH	MECHANICAL
AFP	ACCORDION FOLDING PARTITION	MEZZ	MEZZANINE
AGG	AGGREGATE	MFR	MANUFACTURER
ALT	ALTERNATIVE	MH	MOP HOLDER
AL	ALUMINUM	MIN	MINIMUM
AP	ACCESS PANEL	MISC	MISCELLANEOUS
APPROX	APPROXIMATE	MM	MILLIMETER
AR	ARCHITECTURAL	MO	MASONRY OPENING
ARCH	ARCHITECTURAL	MTL	METAL
ASPH	ASPHALT	N	NORTH
AV	AUDIO-VISUAL	NIC	NOT IN CONTRACT
AWG	AMERICAN WIRE GAUGE	NOH	NUMBER
AWT	ACOUSTICAL WALL TREATMENT	NOM	NOMINAL
L	ANGLE	NTS	NOT TO SCALE
&	AND		
		OC	ON CENTER
BIT	BITUMINOUS	OD	OUTSIDE DIAMETER
BLDG	BUILDING	OPNG	OPENING
BLDG	BUILDING	OPP	OPPOSITE
BM	BENCH MARK / BEAM	O.H.	OPPOSITE HAND
B.O.	BOTTOM OF	O.T.O.	OUT TO OUT
BOS	BOTTOM OF STEEL	OW	OPERABLE WALL
BOT	BOTTOM	OZ	OUNCE
BRG	BEARING	P	PAINT
BRK	BRICK	PA	PUBLIC ADDRESS
BUR	BUILT-UP ROOF	PERF	PERFORATED
		PLAS	PLASTIC
CAB	CABINET	PL	PLASTIC LAMINATE
CAR	CARPET	PLBG	PLUMBING
CAT	CATALOG	PLYWD	PLYWOOD
CB	CHALKBOARD / CATCH BASIN	PREFAB	PREFABRICATED
CFM	CUBIC FEET PER MINUTE	PS	PROJECTION SCREEN
CH	CABINET HEATER	PSF	POUNDS PER SQUARE FOOT
CI	CAST IRON	PSI	POUNDS PER SQUARE INCH
CJ	CONTROL JOINT	PSI	PENCIL SHARPENER SUPPORT
CL	CENTERLINE	PT	PORCELAIN TLA
CLG	CLEAR	PVC	POLYVINYL CHLORIDE
CLG	CEILING	PMCT	PAVEMENT
CMP	CORRUGATED METAL PIPE	QT	QUARRY TILE
CMT	CERAMIC MOSAIC TILE	R	RISER
CMU	CONCRETE MASONRY UNIT	RA	RETURN AIR
CO	CLEANOUT	RADJ	RADIUS
COL	COLUMN	RB	RESILIENT BASE
COMP	COMPACTED	RCP	REINFORCED CONCRETE PIPE
CONC	CONCRETE	RD	ROOF DRAIN
CONSTR	CONSTRUCTION	REF	REFERENCE
CONT	CONTINUOUS/CONTINUE	REFR	REFRIGERATOR
CONTR	CONTRACTOR	REIN	REINFORCING
CORR	CORRUGATED	REOF	REQUIRED
CT	CERAMIC TILE	REV	REVISION(S)
CTO C	CENTER TO CENTER	RM	ROOM
CSK	COUNTER SINK	R.O.	ROUGH OPENING
CU FT/CF	CUBIC FEET	ROW	RIGHT-OF-WAY
CU IN/CI	CUBIC INCH	S	SOUTH
CU YD/CY	CUBIC YARD	SA	SUPPLY AIR
CUSP	CUSPIDOR	SB	SANITARY
CW	COLD WATER	SCHED	SCHEDULE
CWF	CEMENTITIOUS WOOD FIBER	SD	STORM DRAIN / SMOKE DETECTOR
		SECT	SECTION
		SEW	SEWER
		SGFT	STRUCTURAL GLAZED FACING TILE
		SHT	SHEET
		SIM	SIMILAR
		SP	SPACE
		SPEC(S)	SPECIFICATION(S)
		SPKR	SPEAKER
		SQ	SQUARE
		SQ FT/SF	SQUARE FEET
		SQ IN/CI	SQUARE INCHES
		SQ YD/SY	SQUARE YARDS
		SS	STAINLESS STEEL
		ST	STORM/STREET
		STD	STANDARD
		STL	STEEL
		STRUC	STRUCTURAL
		SUSP	SUSPENDED
		SW	SHORT WAY / SIDEWALK
		SYMM	SYMMETRY(CAL)
		SYNTH	SYNTHETIC
		T	TREAD
		T&B	TOP AND BOTTOM
		T&G	TONGUE AND GROOVE
		TA	TOILET ACCESSORY(IES)
		TB	TACKBOARD
		TC	TOP OF CURB
		TEL	TELEPHONE
		TERR	TERRAZZO
		T.O.	TOP OF
		TOC	TOP OF CONCRETE
		TOP	TOP OF FOOTING
		TOM	TOP OF MASONRY
		TOS	TOP OF STEEL
		TV	TELEVISION
		TYP	TYPICAL
		TWS	TACKABLE WALL SURFACE
		UNO	UNLESS NOTED OTHERWISE
		UV	UNIT VENTILATOR
		URNAL	URNAL
		VCT	VINYL COMPOSITE TILE
		VCCWB	VINYL COVERED GYPSUM WALLBOARD
		VERT	VERTICAL
		VFWC	VINYL FABRIC WALLCOVERING
		VIF	VERIFY IN FIELD
		VT	VITREOUS
		VOL	VOLUME
		VR	VAPOR RETARDER
		VRS	VENTED RESILIENT BASE
		VS	VENT STACK
		VT	VINYL STACK
		W	WEST / WIDE / WIDTH
		WI	WITH
		WO	WITHOUT
		WA	WARDROBE ACCESSORIES
		WB	WOOD BASE
		WC	WATER CLOSET / WIND COLUMN
		WD	WOOD
		WH	WATER HEATER
		WP	WORKING POINT
		WSSK	WALL SERVICE SINK
		WWF	WELDED WIRE FABRIC
		YD	YARD / YARD DRAIN
ID	INSIDE DIAMETER		
IN	INCH		
INCL	INCLUDED(,ING)		
INFO	INFORMATION		
INSUL	INSULATION		
INTR	INTERIOR		
INV	INVERT		
JS	JOIST SUBSTITUTE		
JST	JOIST		
JT	JOINT		
KIT	KITCHEN		
L	LENGTH		
LAM	LAMINATE(D)		
LAV	LAVATORY		
LBH	POUND		
LKR	LOCKER		
LL	LIVE LOAD		
LLH	LONG LEG HORIZONTAL		
LLV	LONG LEG VERTICAL		
LVR	LOUVER		
LW	LONG WAY		

MATERIAL SYMBOLS LEGEND

MATERIAL SYMBOLS USED ON THE CONTRACT DOCUMENTS, INCLUDE BUT ARE NOT LIMITED TO THOSE LISTED BELOW

	ASPHALT		WIRE FENCE OR PARTITION
	EARTH		METAL ROOF DECK
	GRAVEL, STONE, OR DRAINAGE FILL		LAMINATED WOOD BEAM (SMALL SCALE SECTION)
	SAND, GROUT, PLASTER, GWB, OR PLAN VIEW OF SIDEWALK		BATT INSULATION
	CONCRETE		RIGID INSULATION
	TERRAZZO		ROUGH WOOD
	CUT STONE		FINISH WOOD
	MARBLE		WOOD OTHER THAN NOMINAL
	SLATE		PLYWOOD
	FACE BRICK (PLAN)		GYPSUM WALLBOARD (LARGE SCALE)
	GLAZED BRICK		STUD WALL (PLAN) - DIMENSIONS TAKEN TO FINISH FACE OF WALL - SEE WALL TYPES
	CONCRETE MASONRY UNIT (PLAN)		SOLID PANEL FOLDING PARTITION OR OPERABLE WALL
	CONCRETE MASONRY UNIT (SECTION)		FABRIC ACCORDION FOLDING PARTITION
	CONCRETE MASONRY UNIT (SOLID, IN SECTION)		ACOUSTICAL TILE CEILING
	SPRAY-ON INSULATION OR FIRE PROTECTION		EXTERIOR INSULATION FINISH SYSTEM

DRAWING SYMBOLS LEGEND

DRAWING SYMBOLS USED ON THE CONTRACT DOCUMENTS, INCLUDE BUT ARE NOT LIMITED TO THOSE LISTED BELOW

	CALLOUT		REVISION TAG		EXISTING CONTOUR
	EQUIPMENT TAG		ROOF TYPE TAG		NEW CONTOUR
	CEILING TAG		BUILDING WALL SECTION		TEST BORING & NO.
	KEY NOTE TAG		DETAIL SECTION		EXISTING POINT ELEVATION
	DOOR TAG		ROOF SLOPE TAG		NEW POINT ELEVATION
	EXTERIOR ELEVATION		MATCHLINE VIEW REFERENCE		STORM SEWER INLETS
	INTERIOR ELEVATION		WALL TAG		
	GRID HEAD		STOREFRONT TAG		
	LEVEL LINE		WINDOW TAG		
			ROOM TAG		

SHEET INDEX

VOLUME A

COVER ABBREVIATIONS AND INDEX

01 CIVIL	COVER SHEET
C0.0	GENERAL NOTES
C0.1	EXISTING CONDITIONS & DEMOLITION PLAN
C2.0	SITE IMPROVEMENTS PLAN
C3.0	PRE CONSTRUCTION EROSION CONTROL PLAN
C3.1	POST CONSTRUCTION EROSION CONTROL PLAN
C4.0	GRADING & DRAINAGE PLAN
C5.0	UTILITY PLAN
C6.0	STORM SEWER PLAN & PROFILE
C7.0	STORMWATER POLLUTION PREVENTION NOTES
C7.1	STORMWATER POLLUTION PREVENTION DETAILS
C8.0	CONSTRUCTION DETAILS
02 LANDSCAPE	SITE LANDSCAPING PLAN
L1.00	
03 STRUCTURAL	GENERAL NOTES
S-001	FOUNDATION PLAN - UNIT A
S-101	FOUNDATION PLAN - UNIT B
S-102	FOUNDATION PLAN - UNIT B
S-103	SLAB AND MASONRY PLAN - UNIT A
S-104	SLAB AND MASONRY PLAN - UNIT B
S-201	ROOF FRAMING PLAN - UNIT A
S-301	FOUNDATION DETAILS
S-302	FOUNDATION DETAILS
S-303	FOUNDATION AND SLAB DETAILS
S-304	SLAB DETAILS
S-305	SECTIONS AND DETAILS
S-306	SECTIONS AND DETAILS
S-401	MASONRY DETAILS
S-402	MASONRY DETAILS
S-403	MASONRY LINTELS
S-501	FRAMING DETAILS
S-502	FRAMING DETAILS
S-503	SECTIONS AND DETAILS
04 ARCHITECTURAL	FIRST FLOOR CODE PLAN
AP101	DEMOLITION PLANS
AD-11A	FIRST FLOOR ARCHITECTURE PLAN - UNIT A
A-11A	FIRST FLOOR ARCHITECTURE PLAN - UNIT B
A-11B	UPPER LEVEL ARCHITECTURE PLAN - UNIT A
A-12A	UPPER LEVEL ARCHITECTURE PLAN - UNIT B
A-12B	FIRST FLOOR REFLECTED CEILING PLAN - UNIT A
AC11A	FIRST FLOOR REFLECTED CEILING PLAN - UNIT B
AC11B	ROOF PLAN
AR101	ROOF DETAILS
AR102	ROOF DETAILS
AR103	ROOF DETAILS
A-201	BUILDING ELEVATIONS
A-300	WALL TYPES AND DETAILS
A-301	BUILDING SECTIONS
A-302	WALL SECTIONS
A-303	WALL SECTIONS
A-304	WALL SECTIONS
A-305	WALL SECTIONS
A-306	WALL SECTIONS
A-320	SECTION DETAILS
A-401	ENLARGED TOILET ROOM PLANS
A-410	PLAN DETAILS
A-501	TYPICAL DETAILS
A-601	DOOR AND FRAME SCHEDULE
A-602	FRAME DETAILS
05 INTERIORS	UNIT A - FIRST FLOOR FINISH PLAN
A11A	UNIT B - FIRST FLOOR FINISH PLAN
A11B	INTERIOR ELEVATIONS
A1201	INTERIOR ELEVATIONS
A1202	ALTERNATE FINISH PLANS & ELEVATIONS
A1401	COURT LINES & GRAPHIC DETAILS
A1601	LIST OF FINISHES & BASE DETAILS
06 EQUIPMENT	UNIT A - FIRST FLOOR EQUIPMENT PLAN
AQ11A	UNIT B - FIRST FLOOR EQUIPMENT PLAN
AQ001	EQUIPMENT LIST OF FINISHES & EQUIPMENT DETAILS

VOLUME B

COVER ABBREVIATIONS AND INDEX

07 PLUMBING	PLUMBING SYMBOLS AND ABBREVIATIONS
P-001	PLUMBING SITE PLAN
PD101	PLUMBING NEW AND DEMOLITION FIRST FLOOR PLANS - EXISTING BUILDING
PF101	OVERALL FIRE PROTECTION PLAN
PF101	PLUMBING FOUNDATION PLAN - UNIT A
PF102	PLUMBING FOUNDATION PLAN - UNIT B
PP101	PLUMBING FIRST FLOOR PLAN - UNIT A
PP102	PLUMBING FIRST FLOOR PLAN - UNIT B
PR101	PLUMBING ROOF PLAN
P-501	PLUMBING DETAILS
P-601	PLUMBING SCHEDULES
P-901	DOMESTIC WATER ISOMETRIC
P-902	SANITARY WASTE AND VENT ISOMETRIC
08 MECHANICAL	MECHANICAL SYMBOLS AND ABBREVIATIONS
M-001	MECHANICAL DEMOLITION AND NEW FIRST FLOOR PLAN - EXISTING BUILDING
MD101	MECHANICAL HVAC FIRST FLOOR PLAN - UNIT A
MH101	MECHANICAL HVAC FIRST FLOOR PLAN - UNIT B
MH102	MECHANICAL HVAC FIRST FLOOR PLAN - UNIT B
MR101	MECHANICAL ROOF PLAN
M-301	MECHANICAL SECTIONS
M-501	MECHANICAL DETAILS
M-601	MECHANICAL SCHEDULES
M-701	TEMPERATURE CONTROLS SCHEMATICS
M-702	TEMPERATURE CONTROLS SCHEMATICS
09 ELECTRICAL	ELECTRICAL SYMBOLS AND ABBREVIATIONS
E-001	ELECTRICAL DEMOLITION AND NEW FIRST FLOOR PLAN - EXISTING BUILDING
ES101	ELECTRICAL DEMOLITION SITE PLAN
ES102	ELECTRICAL SITE PLAN
EL101	PARTIAL ELECTRICAL FIRST FLOOR PLAN
EL101	LIGHTING FIRST FLOOR PLAN - UNIT A
EL102	LIGHTING FIRST FLOOR PLAN - UNIT B
EP101	POWER AND SYSTEMS FIRST FLOOR PLAN - UNIT A
EP102	POWER AND SYSTEMS FIRST FLOOR PLAN - UNIT B
ER101	ELECTRICAL ROOF PLAN - UNIT A
E-501	ELECTRICAL DETAILS
E-502	ELECTRICAL DETAILS
E-601	SCHEDULES AND SCHEMATICS
E-602	RISER DIAGRAM AND PANELBOARD SCHEDULES
10 TECHNOLOGY	SYMBOLS AND ABBREVIATIONS
T-000	FIRST FLOOR DEMOLITION PLAN
TD-11A	OVERALL FIRST FLOOR TECHNOLOGY PLAN
T-101	FIRST FLOOR TECHNOLOGY PLAN - UNIT A
T-11A	FIRST FLOOR TECHNOLOGY PLAN - UNIT B
T-11B	ENLARGED TECHNOLOGY PLAN
T-401	ENLARGED TECHNOLOGY PLAN
T-501	TECHNOLOGY DETAILS
T-502	TECHNOLOGY DETAILS
T-503	TECHNOLOGY DETAILS

SOUTH PUTNAM MS / HS - FIELDHOUSE ADDITION

1780 EAST U.S. HIGHWAY 40 GREENCASTLE, IN 46135

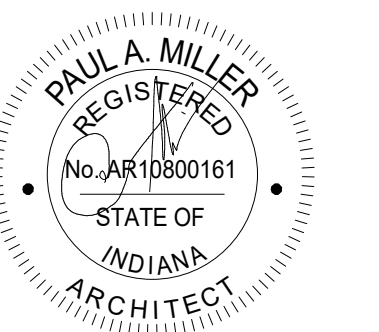


ARCHITECT

FANNING HOWEY

317-848-0966 WWW.FHAI.COM
390 E. NEW YORK ST. SUITE 300 INDIANAPOLIS, IN 46204

100% CONSTRUCTION DOCUMENTS



PROJECT NUMBER: 222152.03
PROJECT ISSUE DATE: 05/23/2024

REV. NO.	DESCRIPTION	DATE
1	ADDENDUM #1	06/13/2024
2	ADDENDUM #5	07/02/2024

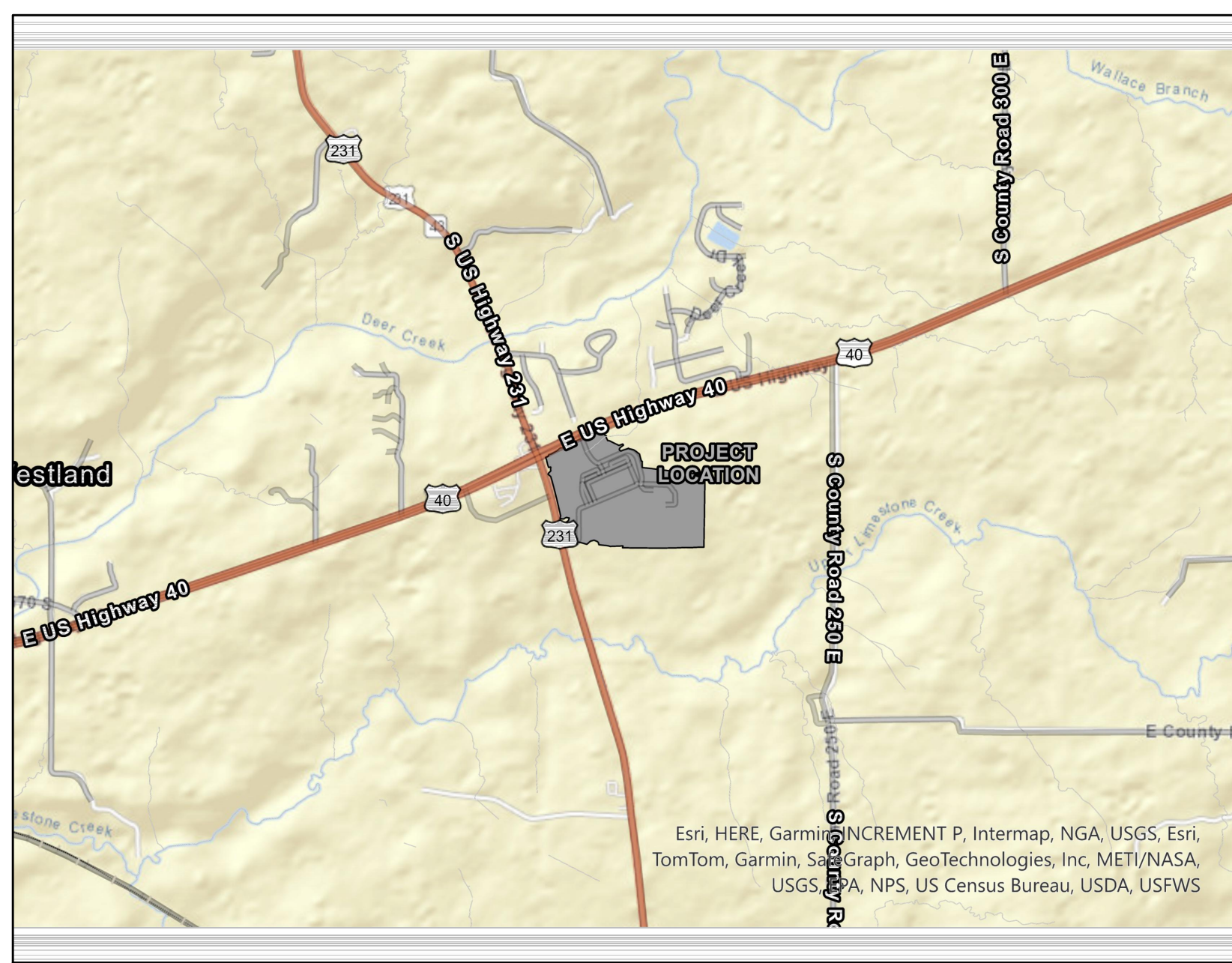
ABBREVIATIONS & INDEX

INDEX B

SOUTH PUTNAM HIGH SCHOOL CONSTRUCTION DOCUMENTS

1780 EAST U.S. HIGHWAY 40, GREENCASTLE, IN 46135

JULY 2, 2024
ADDENDUM #3



LOCATION MAP
not to scale

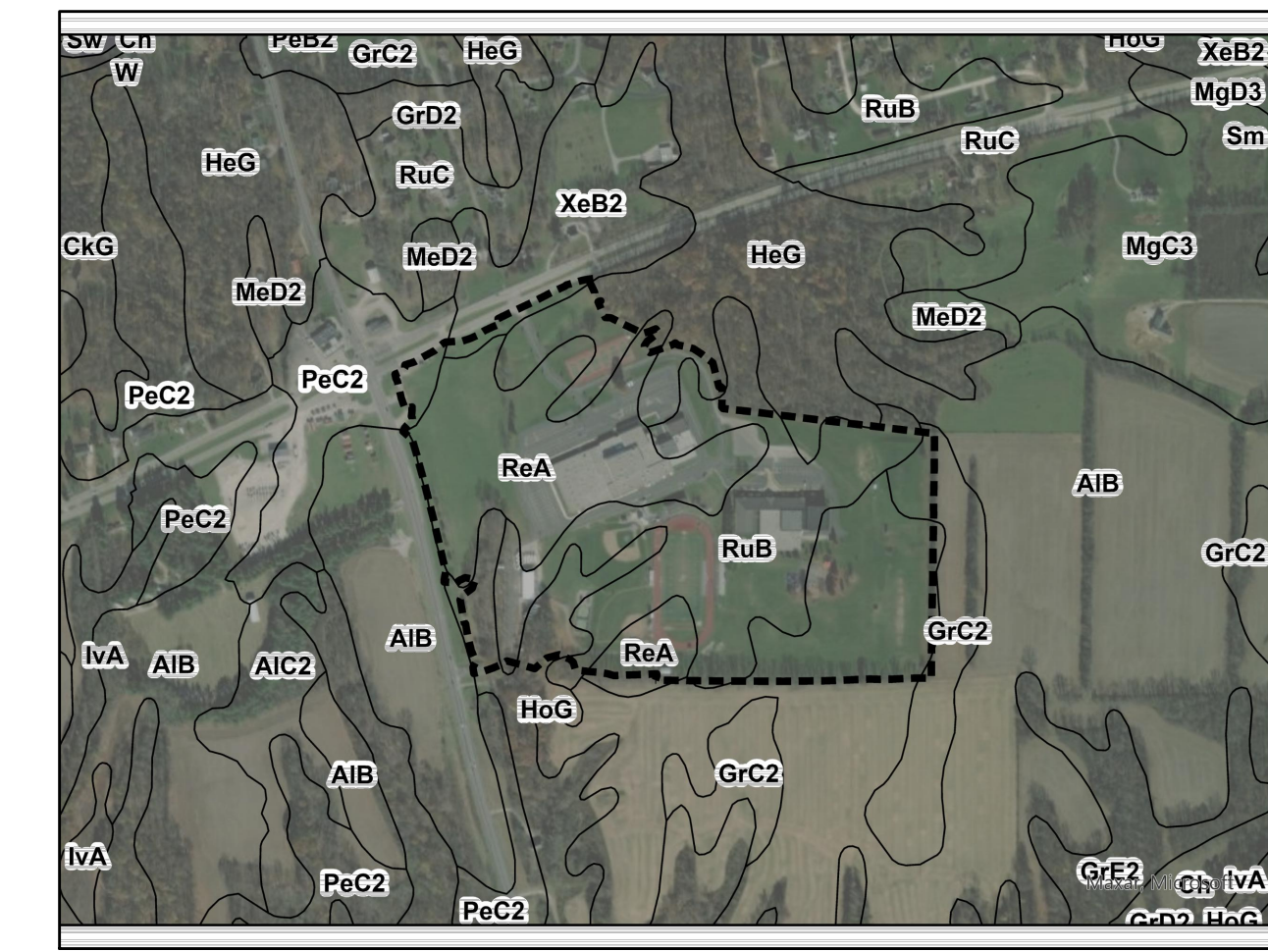
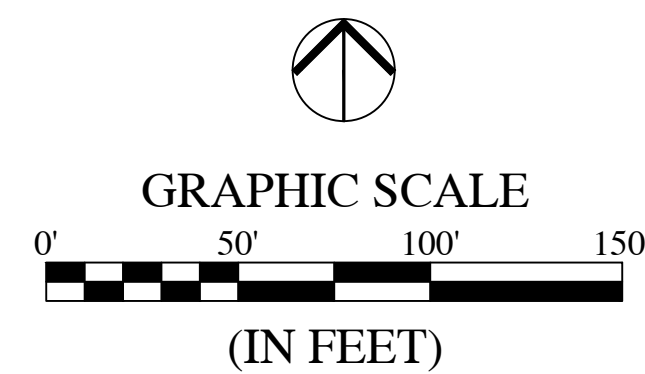
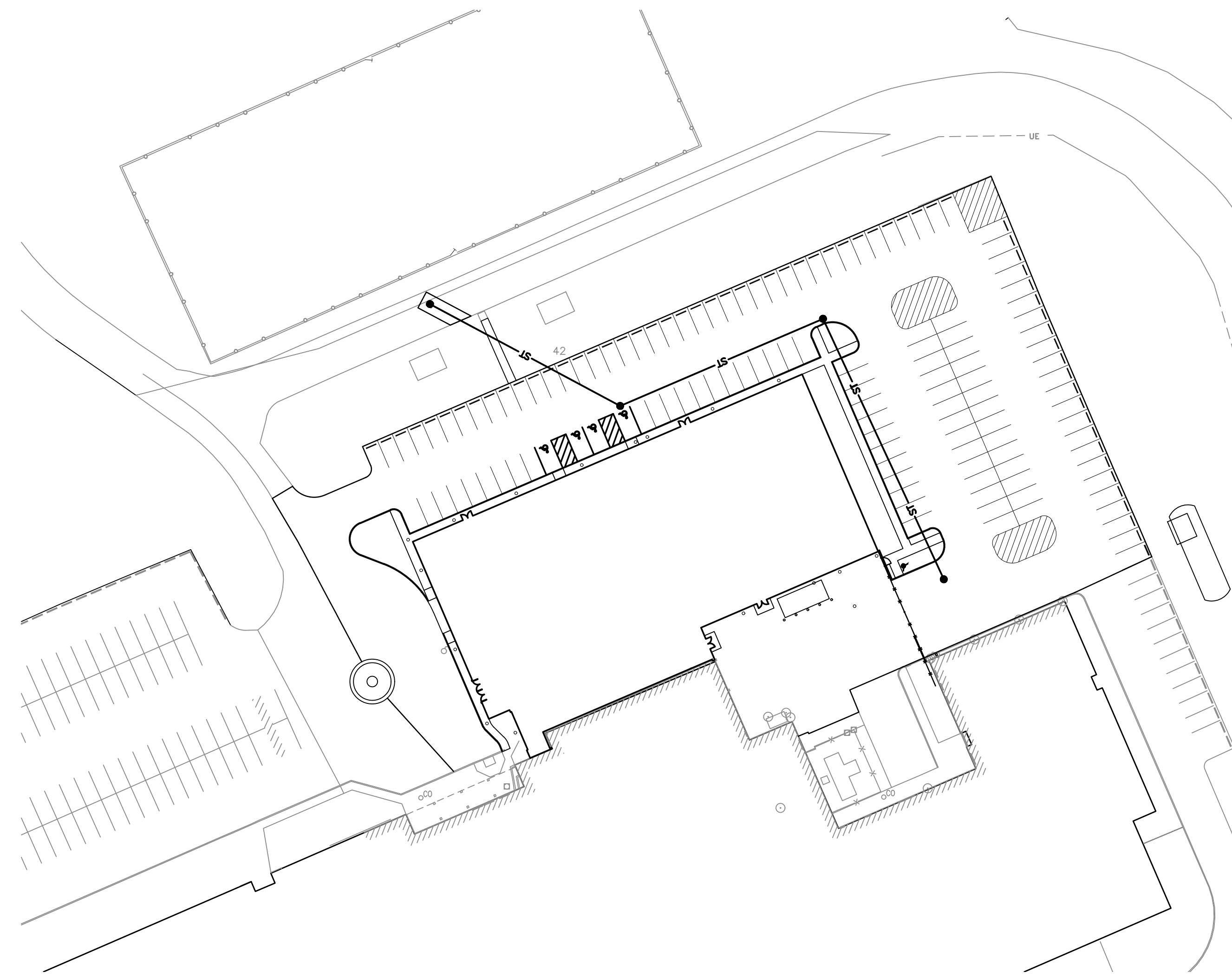


AREA LOCATION MAP: STATE OF INDIANA
SCALE: NONE

1. THE DESIGN AND CONSTRUCTION SHALL COMPLY WITH THE CURRENT PUTNAM COUNTY CONSTRUCTION SPECIFICATIONS AND STANDARD CONSTRUCTION DETAILS. THE OMISSION OF ANY CURRENT STANDARD DETAIL DOES NOT RELIEVE THE CONTRACTOR FROM THIS REQUIREMENT.
2. THE DESIGN AND CONSTRUCTION SHALL COMPLY WITH ALL ADA REQUIREMENTS.
3. THE CONTRACTOR SHALL SCHEDULE A SITE PRE-CONSTRUCTION MEETING WITH SOUTH PUTNAM SCHOOL CORPORATION AND PUTNAM COUNTY PRIOR TO ANY CONSTRUCTION ON THE SITE BEING CONSTRUCTED.
4. THE FINAL SITE INSPECTION WILL NOT BE PERFORMED BY THE PUTNAM COUNTY INSPECTOR UNTIL ALL SITE AND RIGHT-OF-WAY WORK IS COMPLETE.
5. SITE RECORD DRAWINGS ARE REQUIRED TO BE SUBMITTED IN THE REQUIRED STANDARD FORMAT PRIOR TO RELEASE OF THE COMPLETED SITE.
6. ALL ROADS MUST BE BROUGHT BACK TO ORIGINAL OR BETTER CONDITION, INCLUDING BUT NOT LIMITED TO PAVEMENT MARKINGS, CURB/STONE SHOULDERS, SIGNAGE, ETC. REPAIRS SHALL COINCIDE WITH ADJOINING ROAD.

UTILITY CONTACTS

NATURAL GAS: VECTREN TONY SUTHERLIN 812-231-6446	CABLE TV: INSIGHT COMMUNICATIONS WENDY HENRY DISTRICT VICE PRESIDENT 800-824-1769
ELECTRIC: DUKE ENERGY MARVIN PETERS 765-721-3026	WATER: SOUTH 43 WATER ASSOCIATION, INC. P.O. BOX 918 GREENCASTLE, IN 46135 765-657-5000
ELECTRIC: HENDRICKS COUNTY REMC RON MONTS ECONOMIC DEVELOPMENT MANAGER 317-745-6865	SEWER: SOUTH PUTNAM SCHOOL CORP. (PRIVATE) JARED HUTCHESON MAINTENANCE SUPERVISOR 765-653-3148



SOILS MAP
NOT TO SCALE

SOILS LEGEND

PeA	Beesville silt loam, 0 to 2 percent slopes
PeC2	Perke silt loam, 6 to 12 percent slopes, eroded
RuB	Russell silt loam, 2 to 6 percent slopes
AIB	Alford silt loam, 2 to 6 percent slopes
GrC2	Grayford silt loam, 6 to 12 percent slopes, eroded
HoG	Hennepin loam, 25 to 50 percent slopes
XeB2	Xenia silt loam, 2 to 6 percent slopes, eroded
HoG	Hickory loam, 25 to 70 percent slopes

SHEET LIST TABLE

Sheet Title	Sheet Description
C0.0	COVER SHEET
C0.1	GENERAL NOTES
C1.0	EXISTING CONDITIONS & DEMOLITION PLAN
C2.0	SITE IMPROVEMENTS PLAN
C3.0	PRE CONSTRUCTION EROSION CONTROL PLAN
C3.1	POST CONSTRUCTION EROSION CONTROL PLAN
C4.0	GRADING & DRAINAGE PLAN
C5.0	UTILITY PLAN
C6.0	STORM SEWER PLAN & PROFILE
C7.0	STORMWATER POLLUTION PREVENTION NOTES
C7.1	STORMWATER POLLUTION PREVENTION DETAILS
C8.0	CONSTRUCTION DETAILS

SOUTH PUTNAM MS / HS FIELDHOUSE ADDITION

1780 EAST U.S. HIGHWAY 40
GREENCASTLE, IN 46135

SOUTH PUTNAM COMMUNITY SCHOOL CORPORATION

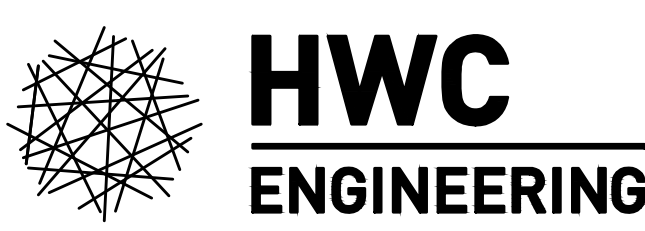


ARCHITECT

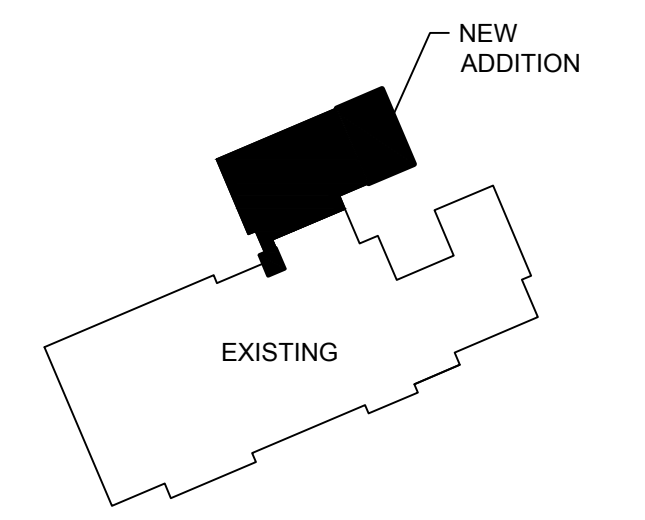


FHAI Phone No.
350 E. NEW YORK ST. SUITE 300 WWW.FHAI.COM
INDIANAPOLIS, IN 46204

CONSULTANT

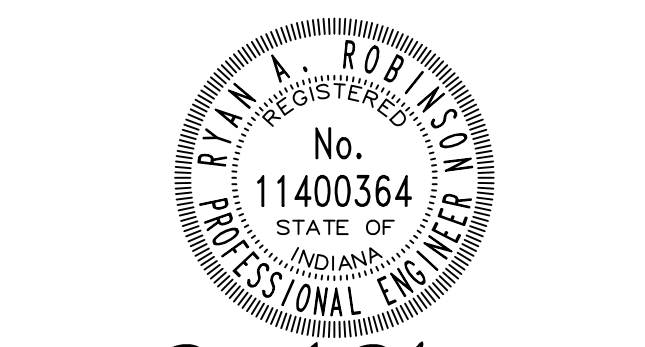


INDIANAPOLIS - TERRE HAUTE
LAFAYETTE - MUNCIE - NEW ALBANY
www.hwcengineering.com



KEY PLAN

100% CONSTRUCTION DOCUMENTS



Ryan A. Robinson

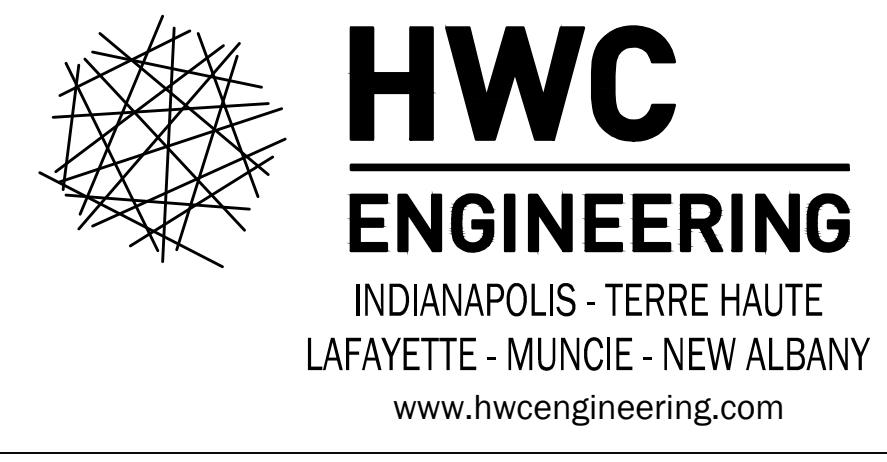
DRAWN BY: CP/DW
PROJECT NUMBER: HWC 2023-404-S, FH 222152.03
PROJECT ISSUE DATE: May 23, 2024

REV. NO.	DESCRIPTION	DATE
1	ADDENDUM #1	6/13/24
2	ADDENDUM #2	6/20/24
3	ADDENDUM #3	7/2/24

VERTICAL DATUM:

COS C 62 RESET 1949	ELEVATION 732.79 (NAVD 88)
A STANDARD DISK SET 1.4 MILES EAST ALONG U.S. HIGHWAY 40 FROM THE POST OFFICE AT PUTNAMVILLE, PUTNAM COUNTY, 1.2 MILES WEST OF THE JUNCTION OF STATE HIGHWAY 43, AT THE EAST END OF A WEIGHING STATION, AT A 2-FOOT BY 3-FOOT CONCRETE BOX CULVERT, IN THE TOP OF THE SOUTH HEADWALL, AND 75 FEET SOUTH OF THE CENTERLINE OF THE EAST-BOUND LANE OF THE HIGHWAY.	
CSC TBM #1380	ELEVATION 804.12
CUT 'X' SET IN THE NORTHEAST MOST BOLT OF A FIRE HYDRANT LOCATED APPROXIMATELY 1,780.7 FEET SOUTH OF THE PHYSICAL CENTERLINE OF THE EAST BOUND LANE OF U.S. HIGHWAY 40 AND APPROXIMATELY 2,063.6 FEET EAST OF THE PHYSICAL CENTERLINE OF U.S. HIGHWAY 231.	
CSC TBM #2930	ELEVATION 770.83
CUT 'X' SET IN THE NORTHWEST MOST BOLT OF A FIRE HYDRANT LOCATED APPROXIMATELY 758.5 FEET SOUTH OF THE PHYSICAL CENTERLINE OF THE EAST BOUND LANE OF U.S. HIGHWAY 40 AND APPROXIMATELY 1,172.0 FEET EAST OF THE PHYSICAL CENTERLINE OF U.S. HIGHWAY 231.	
CSC TBM #4533	ELEVATION 773.76
CUT 'Y' SET IN A CONCRETE RIGHT OF WAY MONUMENT LOCATED APPROXIMATELY 59.5 FEET SOUTH OF THE PHYSICAL CENTERLINE OF THE EAST BOUND LANE OF U.S. HIGHWAY 40 AND APPROXIMATELY 623.3 FEET EAST OF THE PHYSICAL CENTERLINE OF U.S. HIGHWAY 231.	

THE DESIGN AND CONSTRUCTION SHALL COMPLY WITH ALL ADA REQUIREMENTS AND LOCAL JURISDICTION CONSTRUCTION SPECIFICATIONS AND STANDARD DETAILS. THE OMISSION OF ANY CURRENT STANDARD DETAIL DOES NOT RELIEVE THE CONTRACTOR FROM THIS REQUIREMENT.



C0.0
COVER SHEET

SOUTH PUTNAM MS / HS FIELDHOUSE ADDITION

1780 EAST U.S. HIGHWAY 40 GREENCASTLE, IN 46135

SOUTH PUTNAM COMMUNITY SCHOOL CORPORATION



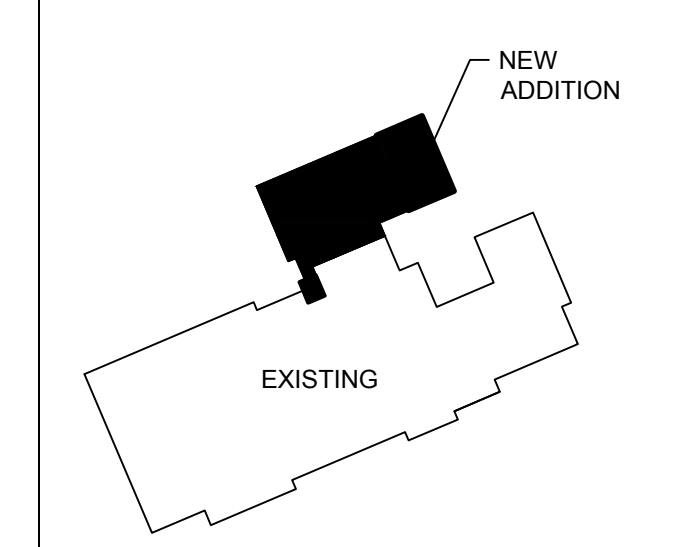
ARCHITECT



FHAI Phone No. 350 E. NEW YORK ST. SUITE 300 WWW.FHAI.COM INDIANAPOLIS, IN 46204

CONSULTANT

HWC ENGINEERING
INDIANAPOLIS - TERRE HAUTE
LAFAYETTE - MUNCIE - NEW ALBANY
www.hwcengineering.com



KEY PLAN

100% CONSTRUCTION DOCUMENTS

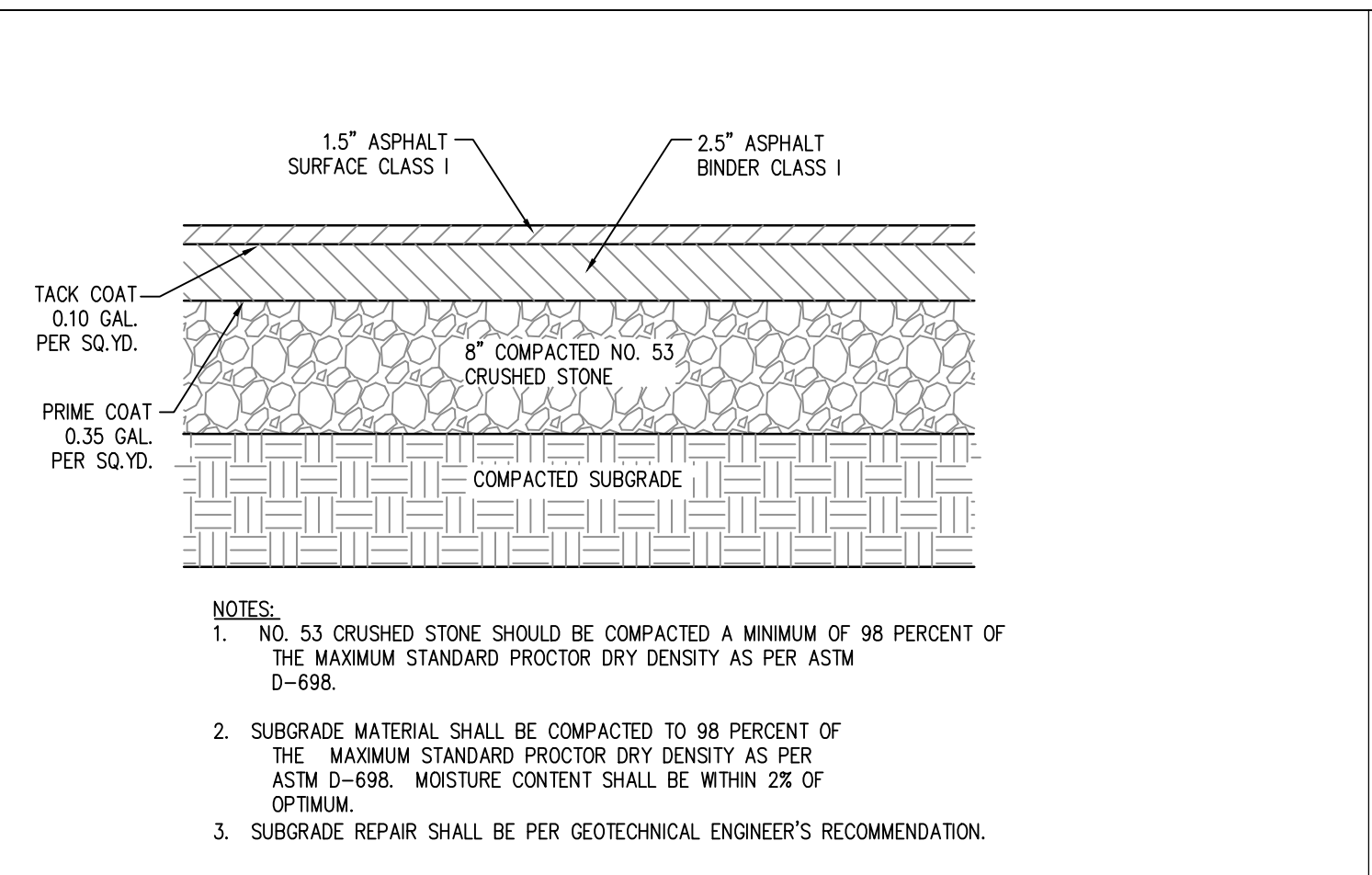
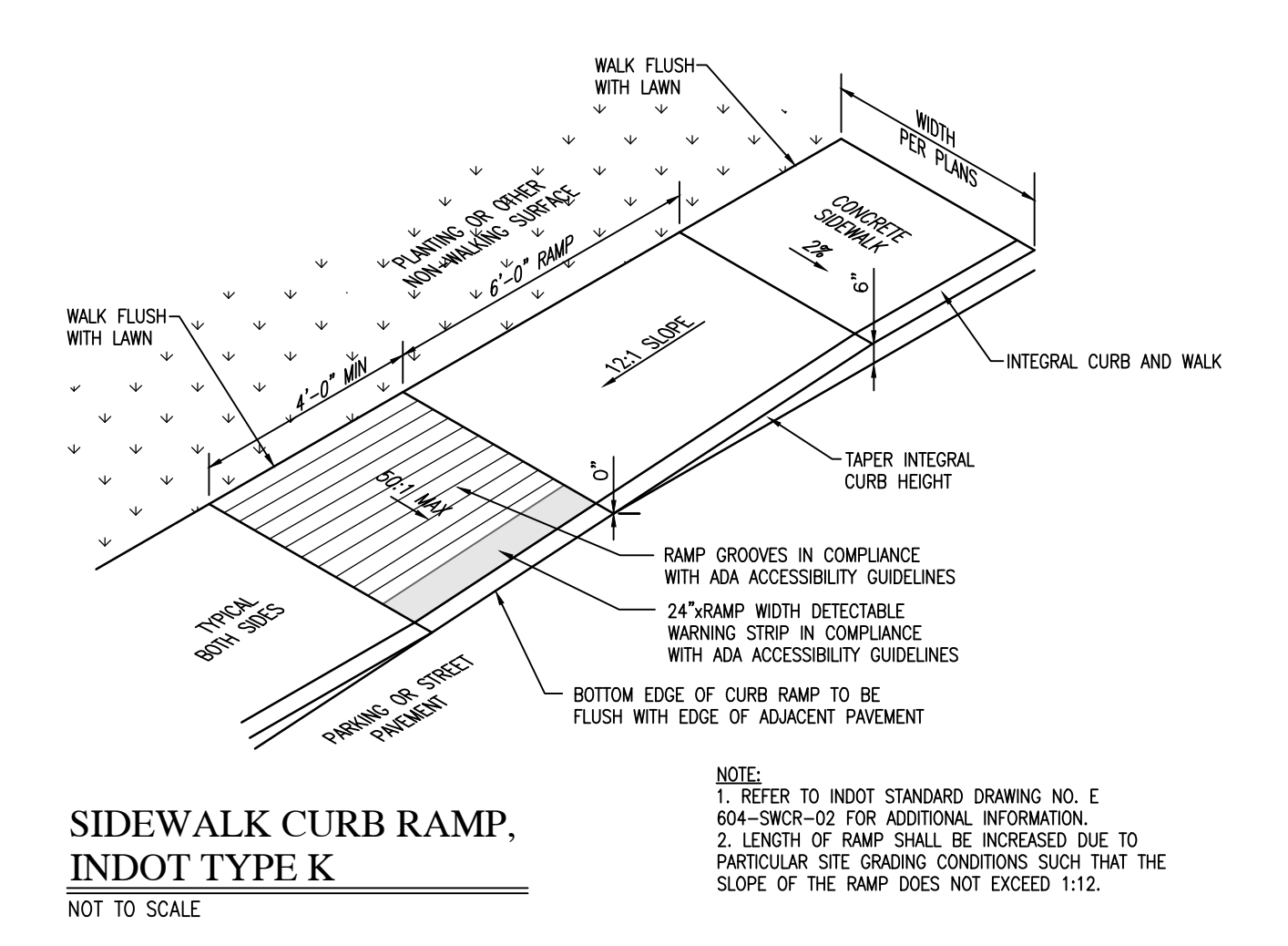
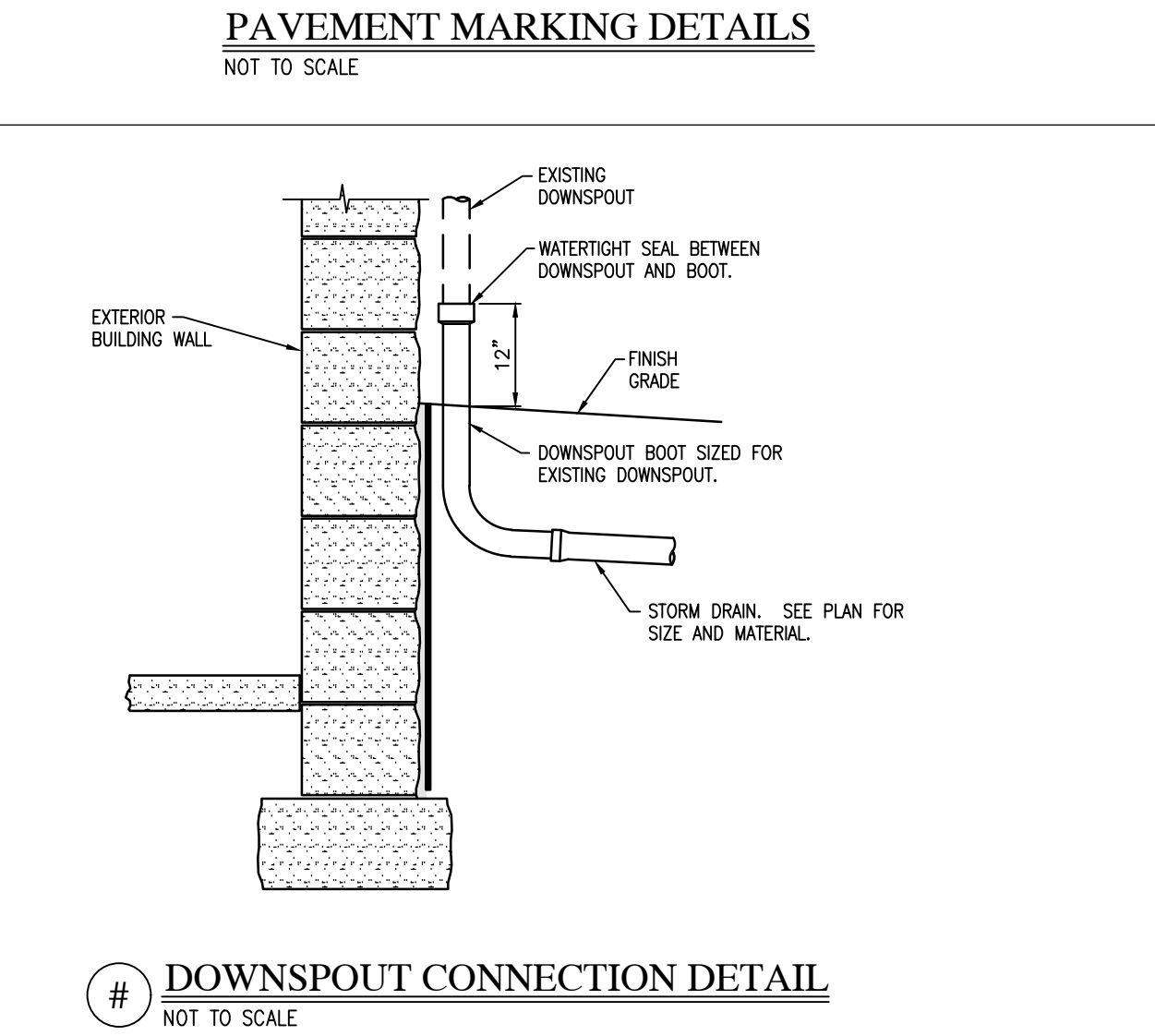
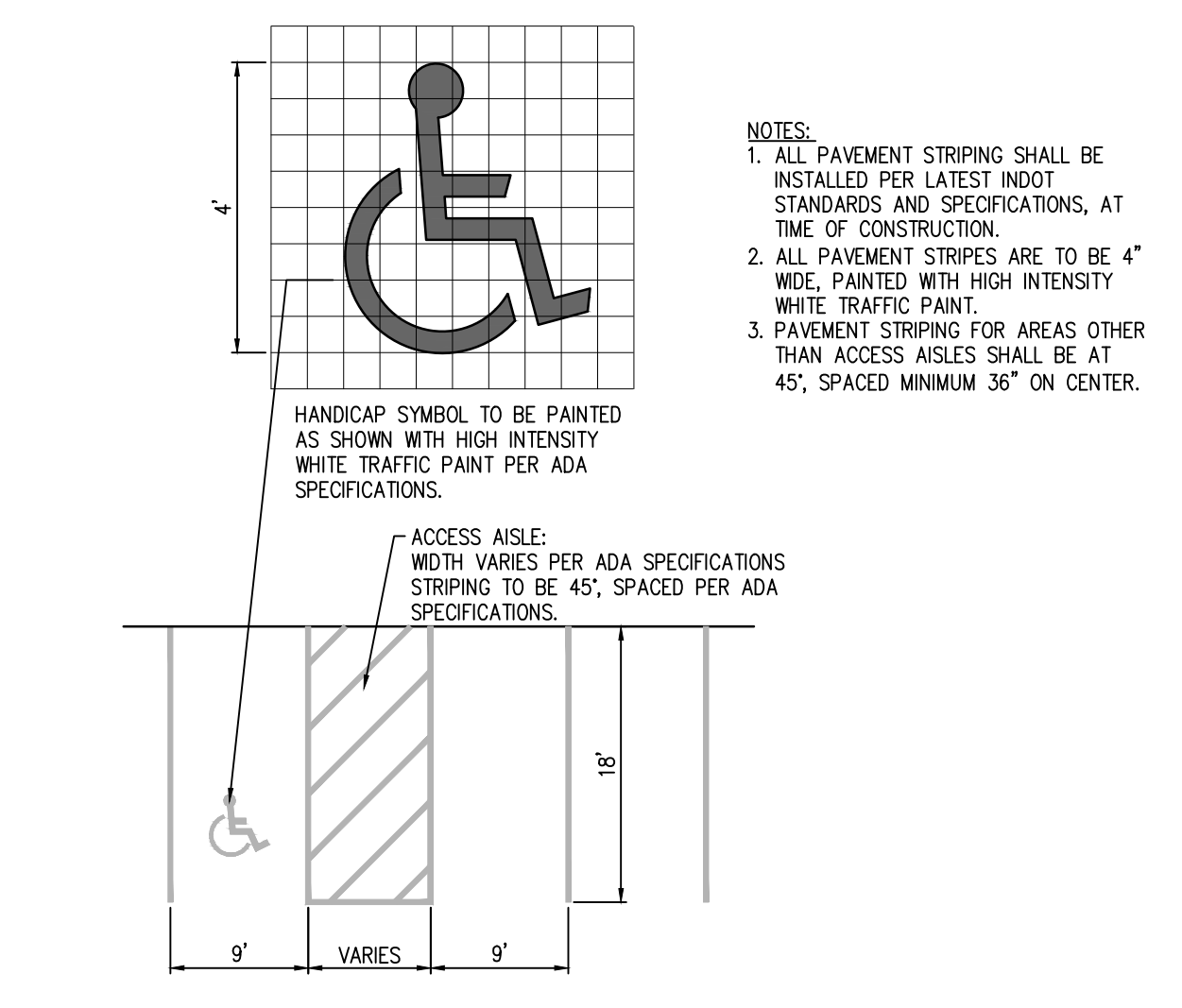
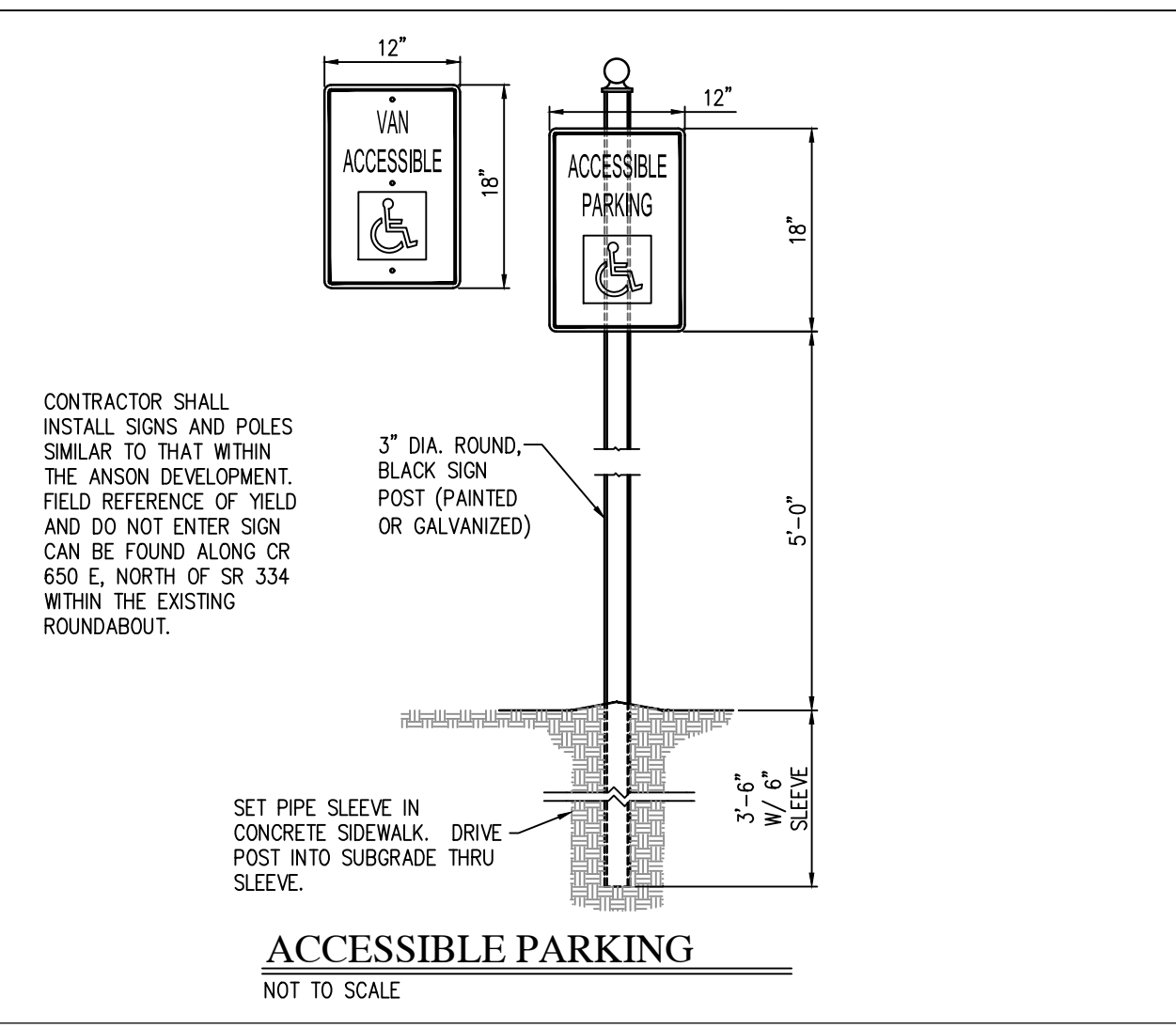
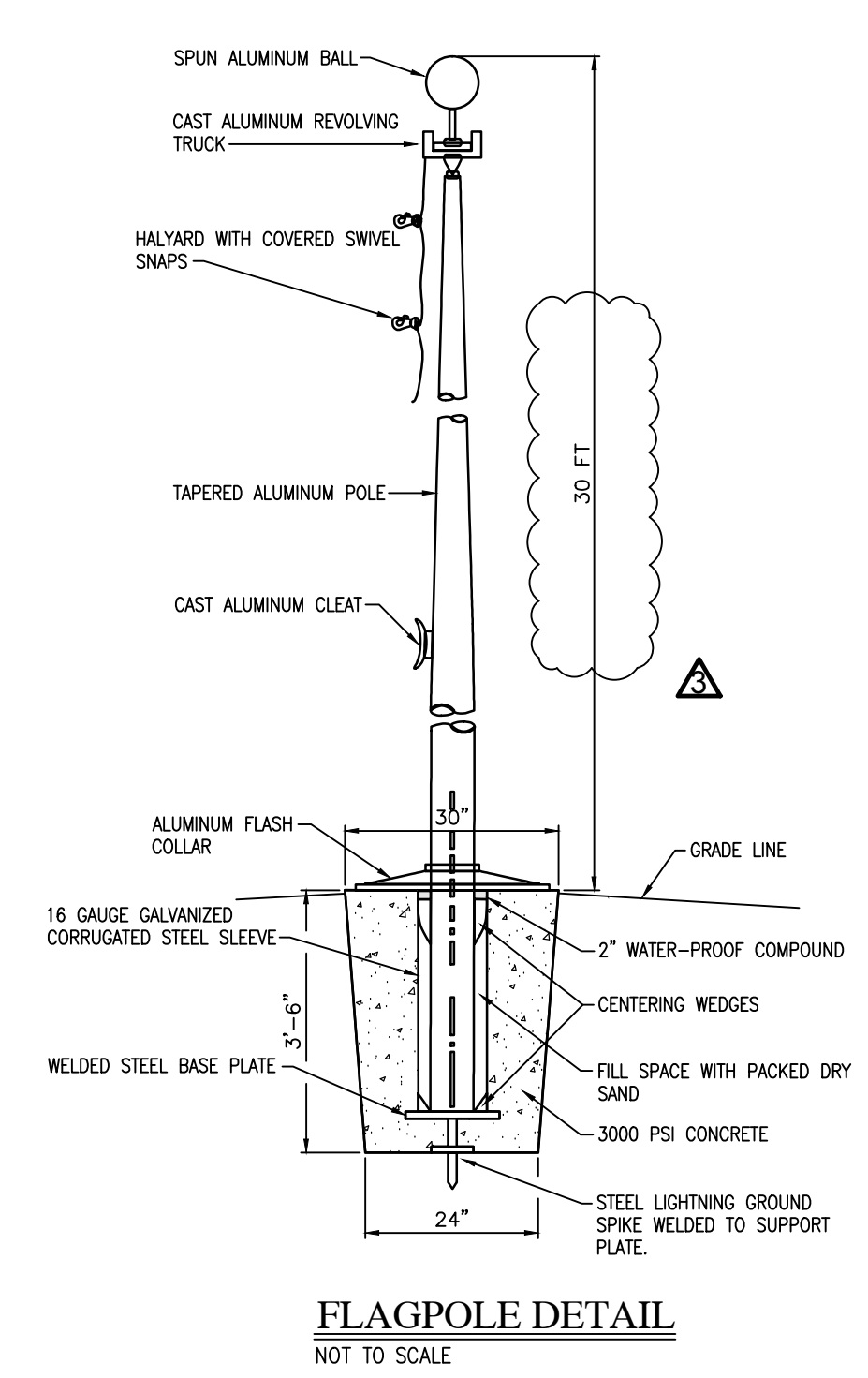
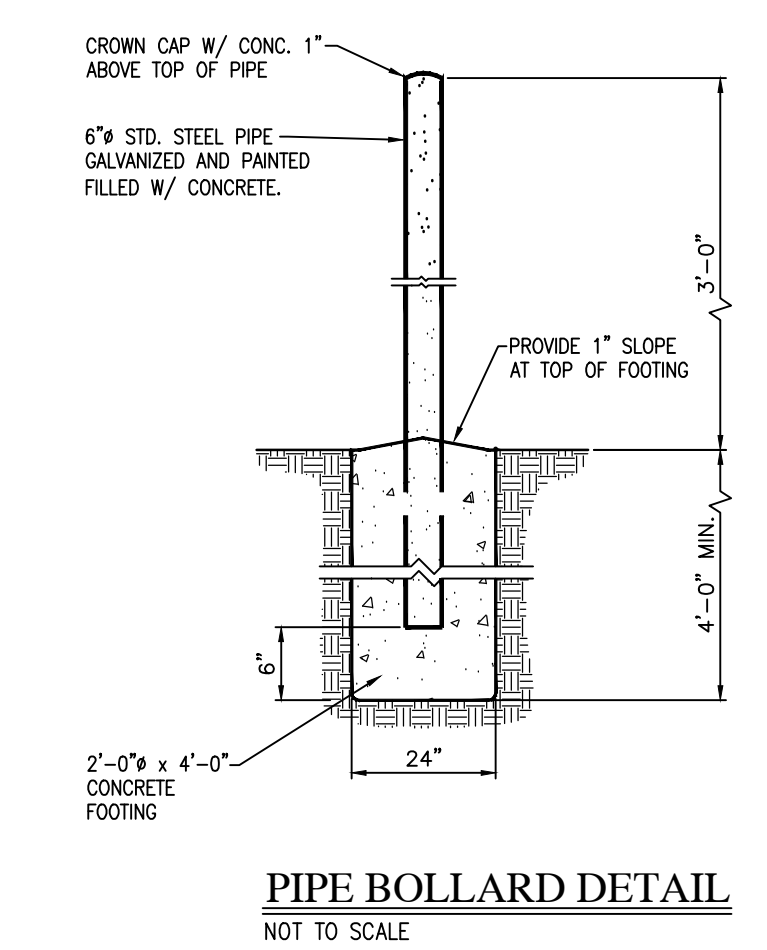
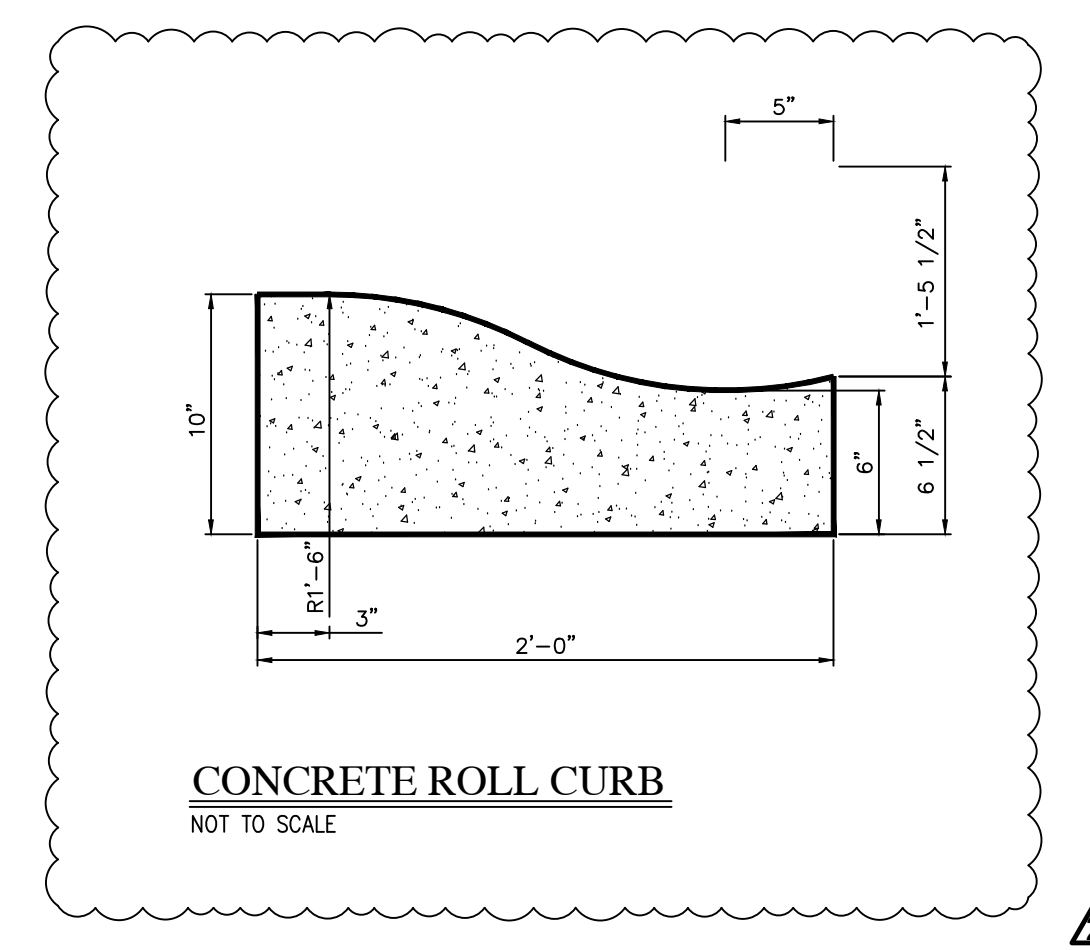
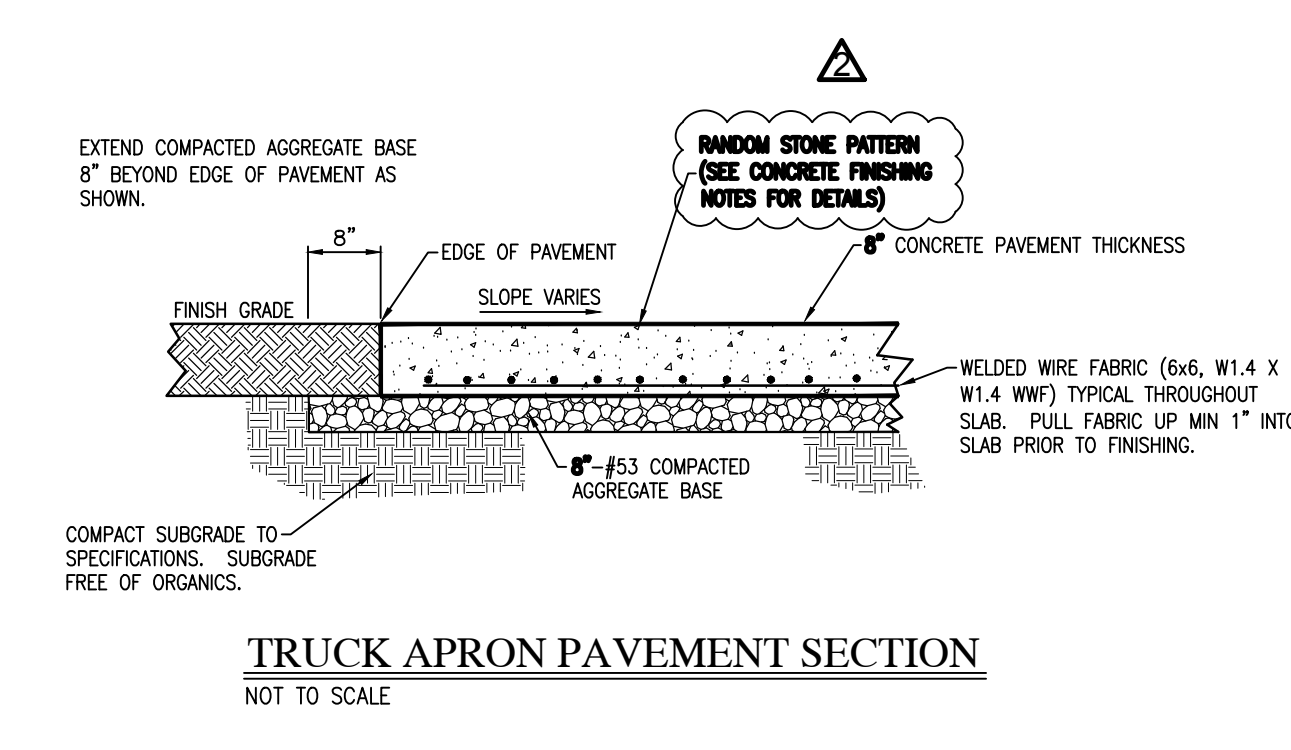
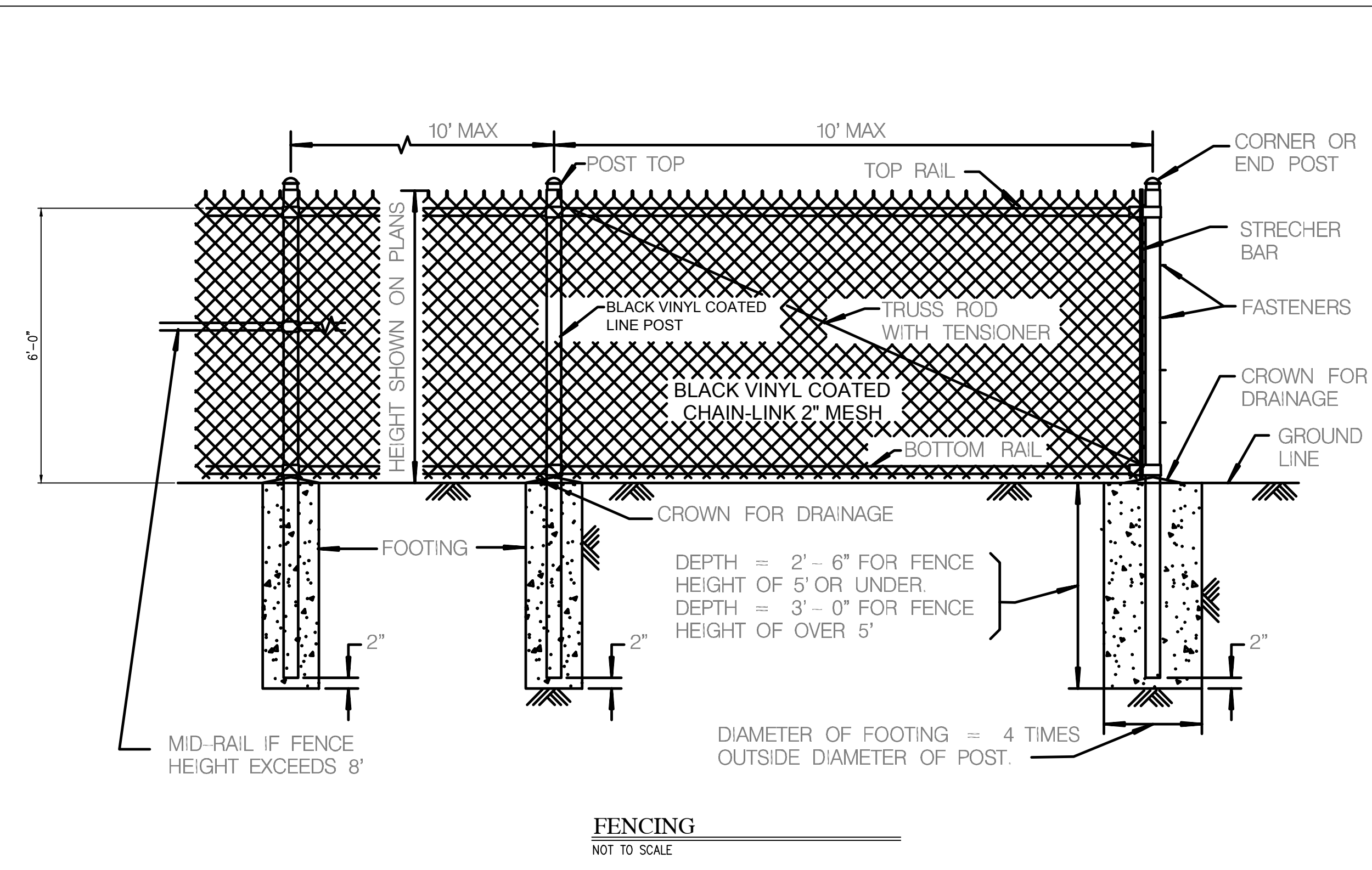


DRAWN BY: CP/DW
PROJECT NUMBER: HWC 2023-404-S, FH 222152.03
PROJECT ISSUE DATE: May 23, 2024

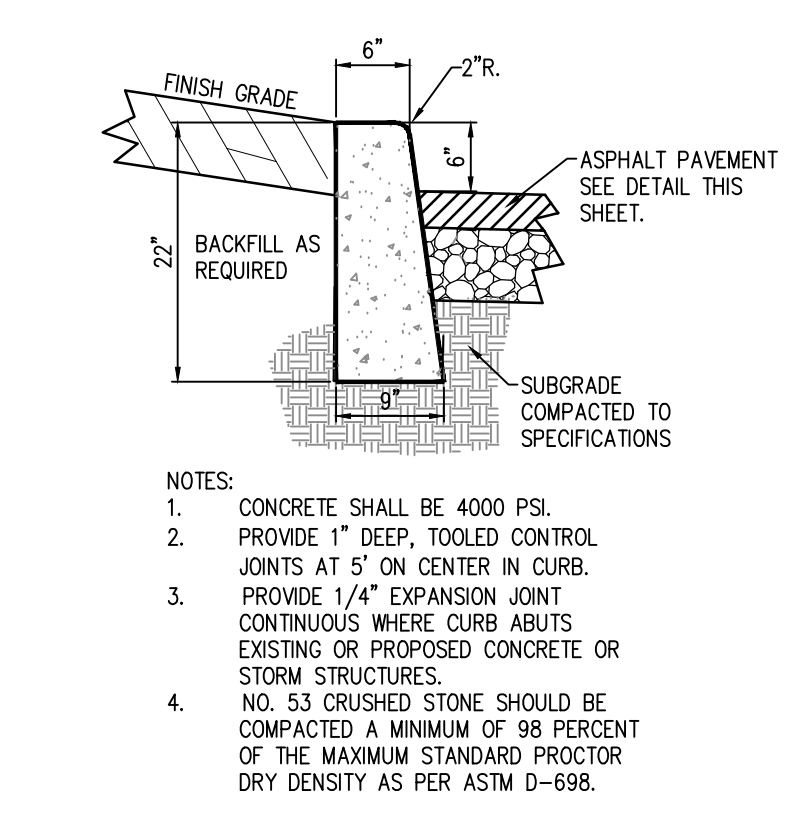
REV. NO.	DESCRIPTION	DATE
1	ADDENDUM #1	6/13/24
2	ADDENDUM #2	6/20/24
3	ADDENDUM #3	7/2/24

C8.0

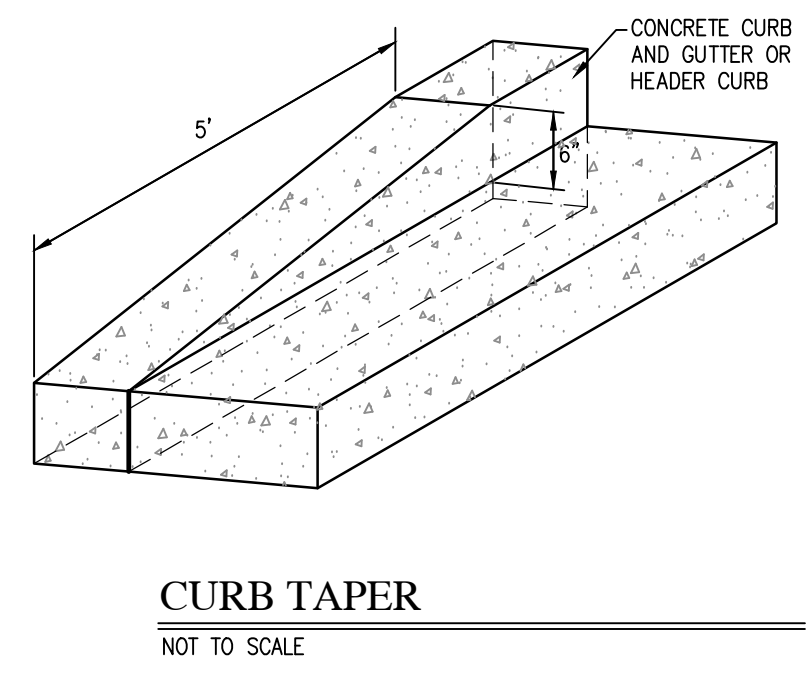
CONSTRUCTION DETAILS



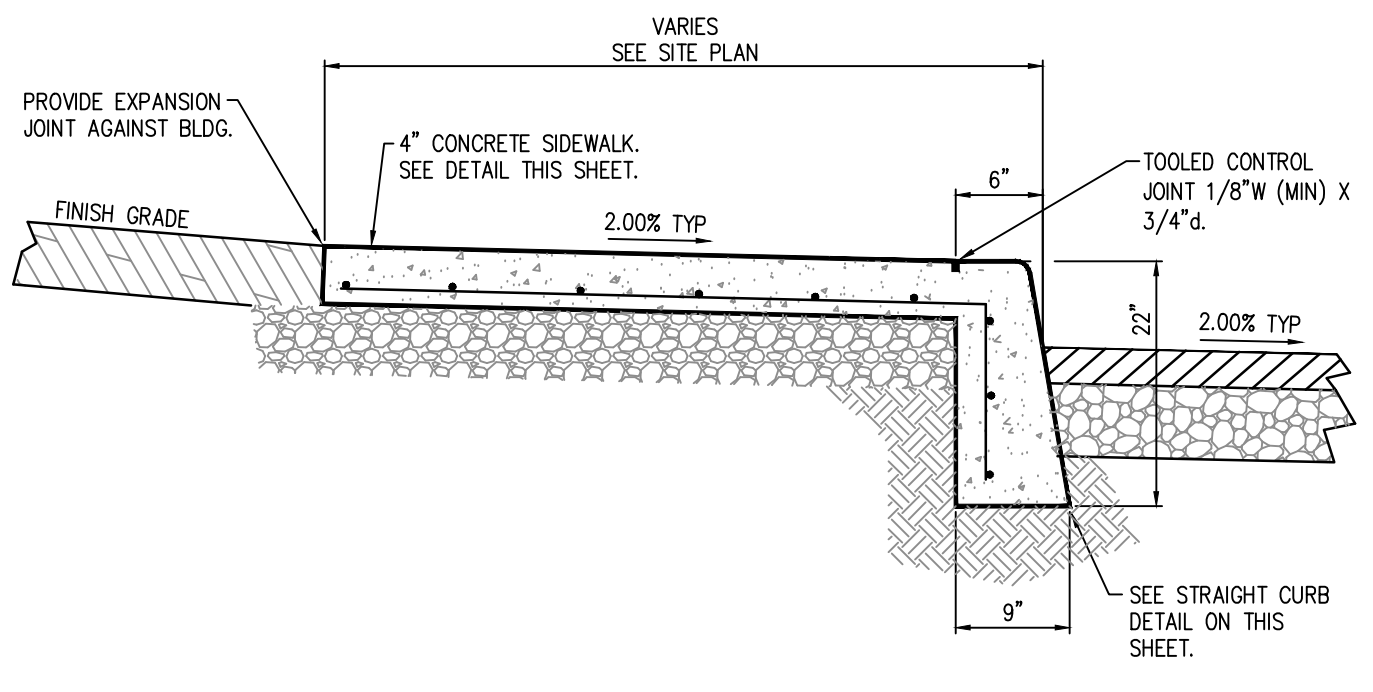
ASPHALT PAVEMENT



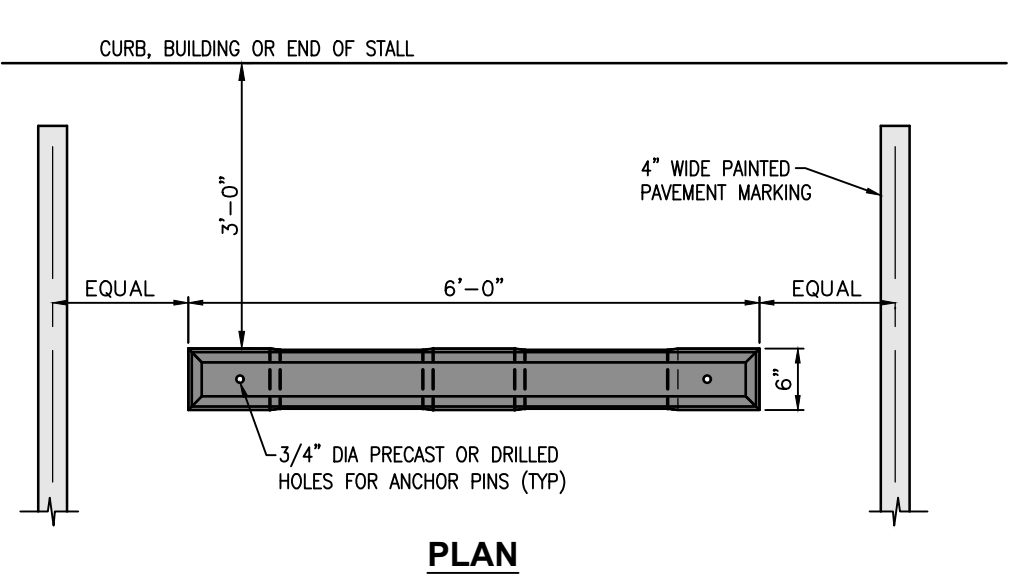
CONCRETE STRAIGHT CURB



CURB TAPER



INTEGRAL CONCRETE CURB & SIDEWALK



CONCRETE PARKING BUMPER DETAIL

File Name: W:\Fanning Howey\2023-404-S South Putnam High School - Athletic Facility Expansion\Design\CAD\23404-S-Construction Details.dwg, Layout: C8.0
Plot Date: Jul 01, 2024
Plot Time: 12:49pm
By: robinson

SOUTH PUTNAM MS / HS - FIELDHOUSE ADDITION

1780 EAST U.S. HIGHWAY 40
GREENCASTLE, IN 46135

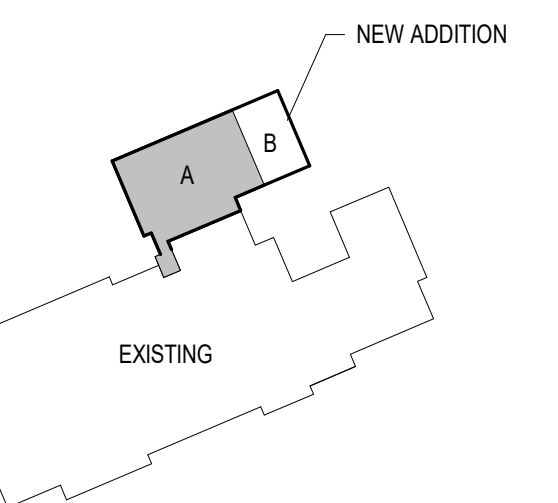
SOUTH PUTNAM COMMUNITY SCHOOL CORPORATION



ARCHITECT

FANNING HOWEY

317-848-0966 WWW.FHAI.COM
350 E. NEW YORK ST. SUITE 300 INDIANAPOLIS, IN 46204



KEY PLAN

100% CONSTRUCTION DOCUMENTS



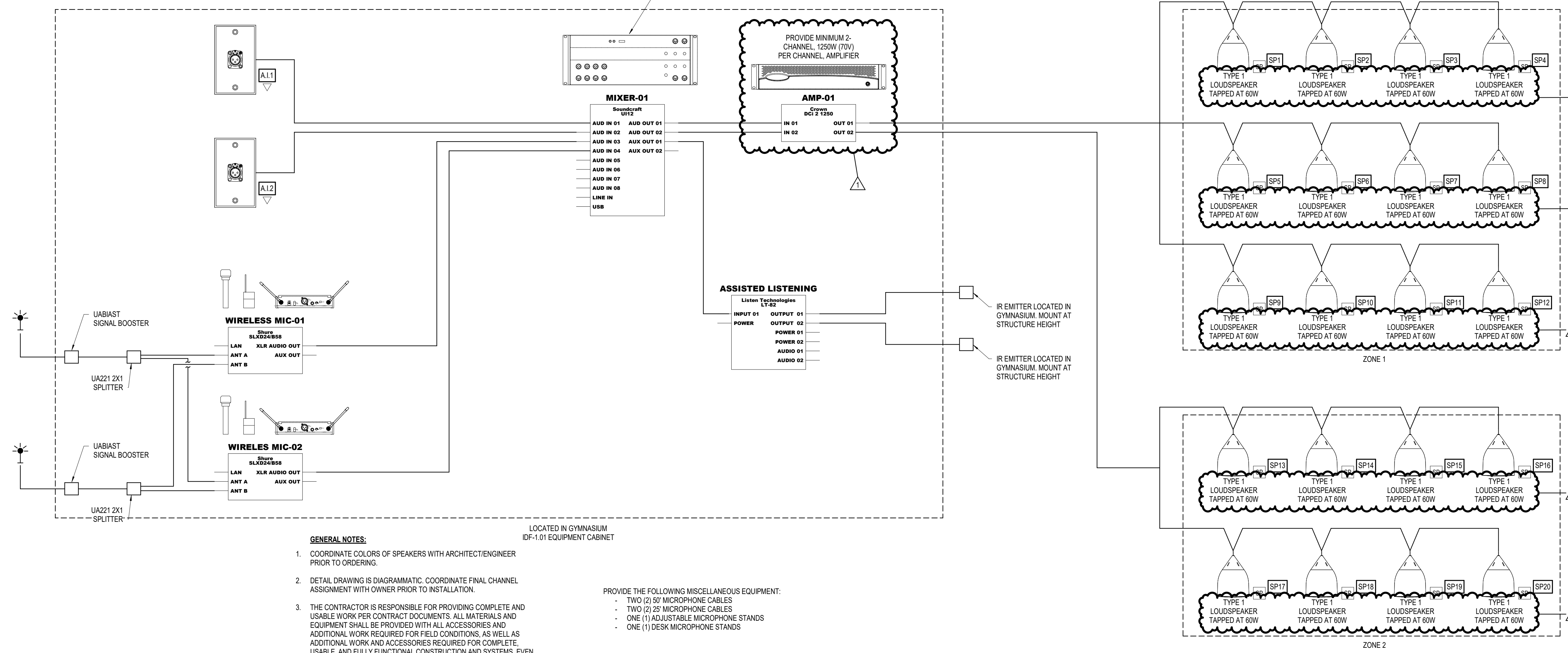
DRAWN BY: EAG
PROJECT NUMBER: 222152.03
PROJECT ISSUE DATE: 05/23/2024

REV. NO.	DESCRIPTION	DATE
1	ADDENDUM 3	07/01/2024

TECHNOLOGY DETAILS

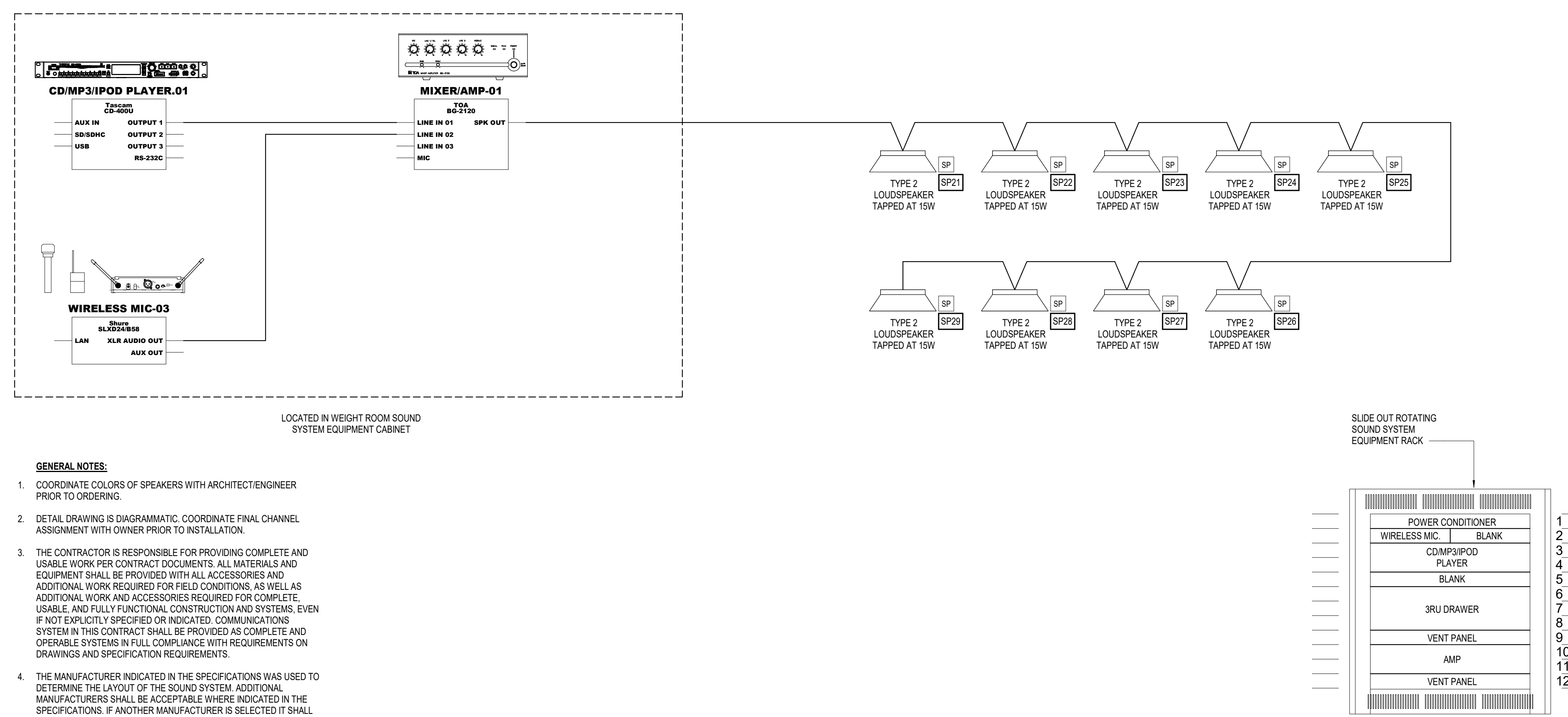
T-503

CONTRACTOR SHALL PROVIDE WIRELESS ACCESS POINT AND WIRE GUARD ENCLOSURE TO BE INSTALLED IN THE FIELDHOUSE. CONTRACTOR SHALL BE RESPONSIBLE FOR PROVIDING A WIRELESS ACCESS POINT THAT SHALL ALLOW FOR WIRELESS COVERAGE OF THE RACK MOUNTED MIXER/MOBILE CONTROL TABLET IN THE FIELDHOUSE WITHOUT USING THE OWNERS NETWORK.



- GENERAL NOTES:**
- COORDINATE COLORS OF SPEAKERS WITH ARCHITECT/ENGINEER PRIOR TO ORDERING.
 - DETAIL DRAWING IS DIAGRAMMATIC. COORDINATE FINAL CHANNEL ASSIGNMENT WITH OWNER PRIOR TO INSTALLATION.
 - THE CONTRACTOR IS RESPONSIBLE FOR PROVIDING COMPLETE AND USABLE WORK PER CONTRACT DOCUMENTS. ALL MATERIALS AND EQUIPMENT SHALL BE PROVIDED WITH ALL ACCESSORIES AND ADDITIONAL WORK REQUIRED FOR FIELD CONDITIONS, AS WELL AS ADDITIONAL WORK AND ACCESSORIES REQUIRED FOR COMPLETE, USABLE, AND FULLY FUNCTIONAL CONSTRUCTION AND SYSTEMS, EVEN IF NOT EXPLICITLY SPECIFIED OR INDICATED. COMMUNICATIONS SYSTEM IN THIS CONTRACT SHALL BE PROVIDED AS COMPLETE AND OPERABLE SYSTEMS IN FULL COMPLIANCE WITH REQUIREMENTS ON DRAWINGS AND SPECIFICATION REQUIREMENTS.
 - THE MANUFACTURER INDICATED IN THE SPECIFICATIONS WAS USED TO DETERMINE THE LAYOUT OF THE SOUND SYSTEM. ADDITIONAL MANUFACTURERS SHALL BE ACCEPTABLE WHERE INDICATED IN THE SPECIFICATIONS. IF ANOTHER MANUFACTURER IS SELECTED IT SHALL BE THE RESPONSIBILITY OF THE CONTRACTOR TO PROVIDE ANY ADDITIONAL CABLING AND EQUIPMENT TO MEET THE COVERAGE AND PERFORMANCE INDICATED.
- PROVIDE THE FOLLOWING MISCELLANEOUS EQUIPMENT:
- TWO (2) 50' MICROPHONE CABLES
 - TWO (2) 25' MICROPHONE CABLES
 - ONE (1) ADJUSTABLE MICROPHONE STANDS
 - ONE (1) DESK MICROPHONE STANDS

1 GYMNASIUM SOUND SYSTEM DIAGRAM
NOT TO SCALE



2 WEIGHT ROOM SOUND SYSTEM DIAGRAM (ALTERNATE BID)
NOT TO SCALE